

CY2026 Bid Pricing Tool Technical Instructions



Last updated 2/10/2025

CY2026 Bid Pricing Tool Technical Instructions

Table of Contents

1.0	Introduction.....	5
1.1	New Features for CY2026	6
1.2	Bid Pricing Tool Function.....	8
1.2.1	Download and Installation.....	8
1.2.2	Excel Security Settings to Allow Add-in Macro to Load	11
1.2.3	Version Compatibility	15
1.2.4	Data Pre-population	16
1.2.5	BPT Commands	17
1.2.6	Populating the BPT working file	18
1.2.7	Finalizing the BPT for submission.....	25
1.2.8	Closing the File	28
1.2.9	Password Protection.....	28
1.2.10	Print Defined Workbook Add-in Function	28
1.2.11	New Releases.....	28
1.2.12	Batch Process Tool.....	29
1.2.13	Accessibility Features	36
1.3	How To... ..	39
1.3.1	Download a Blank Stand-alone BPT Workbook	39
1.3.2	Download and Launch the Batch Process Tool.....	40
1.3.3	Update the BPT Add-In.....	40
1.3.4	Update the Add-In for Multiple BPT Workbooks Using the Batch Tool	41
1.3.5	Finalize an Individual BPT Workbook.....	41
1.3.6	Finalize Multiple BPT Workbooks Using the Batch Tool	42
1.3.7	Use the Backup File to Restore a Prior Version of the BPT.....	42
1.3.8	Re-start the Batch Process if it is Abnormally Terminated.....	42
1.3.9	Update PD National Averages in Multiple PD files	43
1.3.1	Update Multiple MA Files with PD Premiums	43
1.4	Troubleshooting and FAQ.....	45
1.4.1	Problems with the Add-In File	45
1.4.2	Missing Add-in from the Toolbar	46
1.4.3	Frequently Asked Questions	46
1.4.4	Support.....	63

CY2026 Bid Pricing Tool Technical Instructions

Table of Figures

Figure 1- Download BPT Software	10
Figure 2 - Excel Macro Settings	12
Figure 3 – Trusted Locations.....	13
Figure 4 – Unblock the Macro	14
Figure 5 – Add- Ins Window	15
Figure 6 - BPT Add-in Error.....	16
Figure 7 - Add-in Menu Functions	17
Figure 8 - Protected Excel Function Toolbar	23
Figure 9 - Batch Tool Validation Report	31
Figure 10 - Batch Tool Version Update	32
Figure 11 - Batch Tool Finalize BPT.....	33
Figure 12 - Batch Tool Update PD National Avg	34
Figure 13 - Batch Tool Update Prem in MA.....	35
Figure 14 - Keyboard Navigation Instructions.....	38
Figure 15 - Batch Tool Executable File	40
Figure 16 – Unblock the Macro Property.....	47
Figure 17 – Run-Time Error 50290.....	48
Figure 18 – Add- Ins Window	48
Figure 19 - Error Message 1 in MA BPT.....	49
Figure 20 - Error Message 2 in MSA BPT	49
Figure 21 - Error Message in PD BPT	50
Figure 22 - BPT Addin Error.....	50
Figure 23 – BPT Add-in Error due to Sensitivity Label.....	51
Figure 24 - Run Time Error	51
Figure 25 - Run Time Error	52
Figure 26 – Trusted Locations.....	53
Figure 27 - BPT Batch Process Finalization Error	55
Figure 28 - Dependency and Execution Files.....	55
Figure 29 - BPT Finalization Error.....	56
Figure 30 - BPT Finalization Error.....	57
Figure 31 – BPT Add-in Error.....	58

CY2026 Bid Pricing Tool Technical Instructions

Figure 32 – BPT Batch Error due to Add-in	59
Figure 33 – BPT Batch Run-time Error due Processing Large Number of Files.....	60
Figure 34 – BPT Batch Tool Error in Debug Log for MS Office Upgrade	60
Figure 35 – BPT Batch Tool Error due to MS Office Upgrade	61
Figure 36 – BPT Batch Tool Error due to Office 365 Install Issues	61
Figure 37 – BPT Debug Log due to Office 365 Install Issues	62
Figure 38 – BPT Run Time Error when opening files from OneDrive.....	62
Figure 39 – AutoSave Options for BPT Workbooks.....	63

1.0 Introduction

The Bid Pricing Tool (BPT) is a group of Microsoft Excel workbooks that organizations use to develop and submit the pricing components of their Medicare plan bids. The workbooks are enhanced with special features that facilitate and standardize the bid pricing process. These instructions explain the special features and other technical aspects related to using the BPT. CMS recommends that users read this document thoroughly before using the BPT.

The BPT system is comprised of three Excel workbooks. They correspond to the types of bids organizations can submit to CMS; their filenames, for CY2026 are:

1. BPT2026MA.xlsm for Medicare Advantage (MA) bids,
2. BPT2026MSA.xlsm for Medical Savings Accounts (MSA) bids,
3. BPT2026PD.xlsm for Prescription Drug (PD) bids, and

Note: The ESRD BPT has been discontinued as of CY2026.

The BPT employs four versions of these workbooks that serve different purposes throughout the bid price development process:

- Working files – are read-write enabled files that allow users to enter data in specified input fields; bid prices are automatically calculated (in calculated fields) via formulas resident in the files. Users may edit, save, name, and re-name working versions of the BPT workbooks.
- Finalized files – are read-only files created by a process called finalization, which modifies the format of working files to prepare them for submission to CMS. Finalization converts formula results in calculated fields into hard-coded values, removes formulas and other extraneous elements, and saves the file using a standard naming convention. All BPT functionalities are disabled. The finalized save process will delete or standardize some of the data in the finalized file according to specified business rules. The finalized save process will not change the data in the working file. (See Section 1.2.7.1.)
- Backup files – are also read-only files created by the finalization process. The backup file uses the same filename as the finalized file with the word “backup” and a timestamp appended to it. The data in the backup file is the same as that in the working file; removal of the text “backup” from the filename will make the backup file editable. As such, backup files enable users to convert backup files back into working files—if needed—for further modification.
- BPT XML file – An XML file generated from the finalized save process. The file is generated with a standard naming convention with the extension .xml. The XML file will contain only data pertinent to upload.
 - Example: H1234567123MA.xml.

The XML file is not to be modified after finalization of the BPT and must be uploaded alongside the finalized BPT .xlsx file of the same name.

1.1 New Features for CY2026

The following identifies the key changes to the CY2026 BPTs:

1. Added additional troubleshooting steps to assist in working with the latest Microsoft Security features that may block the add-in macro from running. This includes a series of Trust Center settings which may require coordination from your IT department (see section 1.2.2).
2. Auto-Save disabled on BPTs to prevent conflicting with the Add-in save features.
3. Updated the Add-in Toolbar to display only the text-based functions and removed the icons to resolve issues with inconsistent loading of the Add-in (see Figure 7).
4. Discontinued use of the ESRD-SNP BPT
5. MA BPT
 - a. MA Worksheet 1 –
 - i. Removal VBID-H
 - ii. VBID-C defaulted to ‘N’
 - iii. Addition of “Level of Significance” input – 0% - 100%
 - iv. Section VI for provider risk sharing
 - b. MA worksheet 3 –
 - i. Removal of 19c in mapping section
 - c. MA Worksheet 4 -
 - i. Addition of ESRD subsidy input
 - ii. Provider risk sharing cells T73:U98
6. PD BPT
 - a. PD Worksheet 1 -
 - i. VBID-D defaulted to ‘N’
 - ii. Removal of ESRD-SNP indicator
 - iii. Removal of Insulins and Vaccines from Section VI
 - iv. Updated deductible from \$505 to 545
 - v. Addition of “DIR10” Section
 - b. PD Worksheet 2 –
 - i. Addition of “DIR10” Section
 - ii. Activation of Maximum Fair Price Drugs
 - c. PD Worksheet 3 -
 - i. Removal of Insulins and Vaccines from Section IV
 - ii. Activation of Maximum Fair Price Drugs

CY2026 Bid Pricing Tool Technical Instructions

- d. PD Worksheet 6 –
 - i. Relocation of selected subsidy input cells
- e. PD Worksheet 7 -
 - i. Addition of Selected Subsidy

NOTE: Office 365 has introduced a Sensitivity Label feature which allows Sensitivity labeling to be added to the 365 application suite. The BPTs and BPT add-in will not function properly if this classification feature has been implemented as part of your organizations policy for Excel. This feature will need an exception in order for BPT to properly maintain macro security and execution.

1.2 Bid Pricing Tool Function

1.2.1 Download and Installation

1.2.1.1 Configuration Requirement

For the BPT to work properly, you must configure your PC to satisfy the following requirements. BPT is only supported on Windows; it cannot be utilized on MAC:

- Have Microsoft 2016, 2019 or the 365 Offline version installed.
 - The BPT will work with either 32 bit or 64-bit versions of Excel.
 - The BPT will not work with the 365 Online version. The desktop version of Office 365 requires a local installation unlike the online version (internet). The online version does not have the features needed to support BPT.
 - The BPT will not work with Office 365 if a Sensitivity Label has been applied by your organizations' policy. This will cause the BPT security to conflict with the label classification and the add-in will not function properly.
 - Excel 2013 is not supported.
- Create a folder under C:\BPT\BPT2026.
 - Set the folder as a Trusted Location for the BPT and Add-in File to ensure the add-in properly loads. This step may not be required for all user setups. Open an Excel file and navigate to: File>Options>Trust Center>Trust Center Settings>Trusted Locations> 'Add New location'. Add the location of "C:\BPT\BPT20XX" by selecting the Browse button and select the checkbox "Subfolders of this location are also trusted". Click 'Ok'.
- Users must keep the Add-Ins ribbon enabled.

Note: The BPT-specific Add-in functions are loaded with the Add-Ins ribbon enabled whenever a workbook is opened. If the Add-Ins ribbon is disabled, the BPT-specific options will be removed and will not re-appear until the workbook is re-opened.
- Set your Excel Macro Security Settings to "Disable all macros with notifications."
- Enable macros when you open the BPT workbook.
- Copy BPT Add-in (BPT2026.xlam) in the **C:\BPT\BPT2026** folder. The Add-in must be located in this location for the BPT files to work properly.
- For optimal performance, it is recommended that all working files be stored in the **C:\BPT\BPT20XX** over OneDrive. The AutoSave has been disabled by default and is recommended to keep this feature disabled to assist in preventing issues with the Add-in save features.

CY2026 Bid Pricing Tool Technical Instructions

1.2.1.2 Installing the Add-in File

The CY2026 BPT is comprised of the following three Microsoft Excel file types:

1. Working BPT Files: MA, PD, MSA (.xlsm files)
2. Finalized BPT Files: MA, PD, MSA (.xlsx files)
3. Macro code: BPT Add-In (.xlam file).

The BPT workbook file contains the BPT worksheets in which bid pricing is calculated based on user-entered data. The BPT Add-in contains the code that supports the BPT workbook functionality.

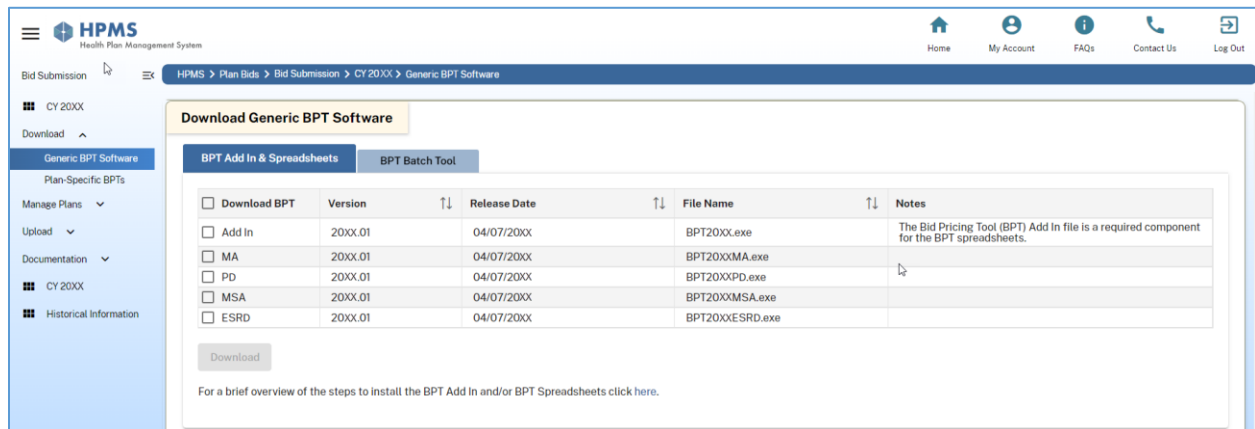
The BPT workbooks and the BPT Add-in files can be downloaded as part of the Plan Benefit Package (PBP) software or as separate stand-alone files:

The BPT workbooks and the BPT add-in files can be downloaded with the PBP software, which contains MA, PD and MSA benefit information. To download the BPT workbooks as part of PBP:

1. Go to the Health Plan Management System (HPMS) website and select Plan Bids > Bid Submission > CY 20XX > Download > Generic BPT Software (Figure 1-) (Where 'XX' is your current Contract Year).
2. From the tab 'BPT Add In & Spreadsheets' select the checkbox for the Add In and BPTs required.
3. Click the 'Download' button. An executable file, SetupPBP2026.exe will begin the installation when executed (double-clicked).
 - a. Click 'Next' to install the file.
 - b. Click 'Yes' on the Disclaimer
 - c. Select the file destination and click 'Next'. Files by default are downloaded to a folder of your choosing; the Add-in file is saved in **C:\BPT\BPT2026**. (If the BPT2026 folder does not exist, the PBP process will create it.)
 - d. Click 'Install'.
 - e. The BPT workbooks and add-in are downloaded to **C:\BPT\BPT2026** folder.
 - f. This installation process supports BPT data pre-population from the PBP. (See Section 1.2.4, "Data Pre-population," below.)
4. You can also download the BPT Batch Tool by selecting the 'BPT Batch Tool' tab and clicking the 'Download' button. An executable file will begin the installation when executed (double-clicked).
 - a. Unzip the file to download to the **C:\BPT\BPT2026** folder. The Add-in file must be saved in **C:\BPT\BPT2026**.
 - b. This installation process does not support data pre-population from the PBP (i.e., the workbooks are blank).

CY2026 Bid Pricing Tool Technical Instructions

Figure 1- Download BPT Software



Note: You must create the **C:\BPT\BPT2026** folder and save the BPT Add-in file to the BPT2026 folder. If there is an existing BPT2026.xlam file in the C:\BPT\BPT2026 folder, you must always **overwrite** the existing BPT Add-in (BPT2026.xlam) file saved on your PC with the most current version. (Do **NOT** move/copy the add-in to another location on your PC such as OneDrive as the BPTs will not work if the add-in is not in this location.) BPT's that are prepared by user may be stored anywhere on the user's PC however, the most optimal location is the C:.

NOTE: The 'AutoSave' feature is disabled and should remain disabled when working with the BPTs to prevent conflicting with the Add-in save features.

If you do not save the BPT Add-in file in the designated folder, you will receive a message within the BPT workbook stating that the BPT2026.xlam (BPT Add-in) file cannot be found. The BPT will open in read-only mode. **If the BPT Add-in is not saved in the correct folder, you will not be able to use the BPT.**

The BPT add-in does not interfere with any non-BPT files.

For users that prepared BPTs for previous contract years, BPT Add-in files should be left in place from previous years. Leave all previous contract years in their respective folders. (e.g. C:\BPT\BPT2025 or BPT2024).

CY2026 Bid Pricing Tool Technical Instructions

1.2.2 Excel Security Settings to Allow Add-in Macro to Load

BPT working files and the Batch tool are supported in Excel 2016, 2019 and Excel 365 Desktop version. Excel 2013 and Office 365 with Sensitivity Label is not supported. The BPTs are configured with a Digital Signature to ensure the Add-in will load upon opening the BPTs however not all environments will recognize the CMS Certificate automatically.

Due to continued Microsoft updates, enhancements in security, your IT department settings and local environment settings, each user may have different experiences with the Add-in macro loading. The following sections provide various steps to allow the Add-in to load and work arounds to enable the macro. Each system may require different settings even within the same organization.

With a successful setup the workbook will then open with the Add-in loaded. The Add-in functions will be part of the Add-Ins ribbon.

Please work with your IT/IS department to ensure you have adequate permission to configure the settings as shown and run macros in your environment. For additional troubleshooting see the Troubleshooting options in section 1.4.

1.2.2.1 Macro Security Level Setting

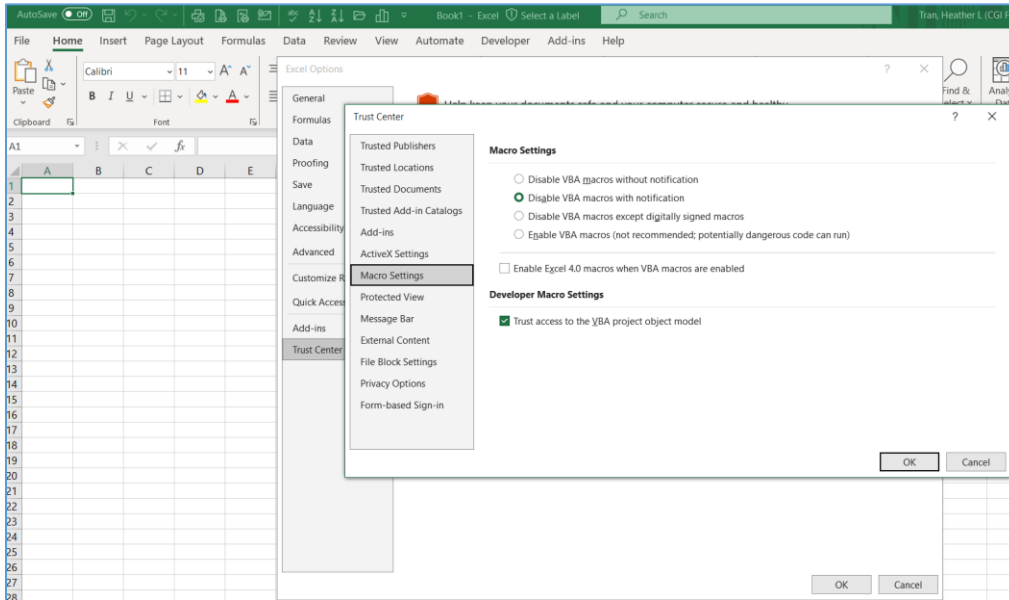
When opening the BPTs the Add-in macro will need to load. Use the following settings to allow the macro to load. Recommended Macro Security settings:

- “Disable VBA macros with notification” or “Disable all macros with notification” depending on the version of Excel you are running. The “Enable VBA macros” can also be utilized but is not a recommended option as this will allow any macro beyond just the BPT Add-in to run without notifying you.
- To enable this setting File>Options>Trust Center Settings>Macro Settings (See Figure 2). The BPTs are configured with a Digital Signature to ensure the Add-in will load upon opening the BPTs. Work with your IT department if you do not have access to modify the Macro settings.
- With the “Disable VBA macros with notification” setting, the workbook will open with a Splash screen (i.e., a static information screen) and will see a message: “Security Warnings. Macros have been disabled.” with a button to enable. You must click the button “Enable this content”.
- With the “Disable VBA macros with notification” setting, it is possible that the workbook will open and be editable without the Add-in loaded. This may be due to previous Excel instances that were not closed correctly. In this situation, you must select “Enable this content” to load the add-in. The BPT file will not function properly until the Add-in is loaded (when all add-in functions appear on the Add-in toolbar.)

CY2026 Bid Pricing Tool Technical Instructions

- i. Do NOT save any changes in the workbook until you select the “Enable Macros” button.

Figure 2 - Excel Macro Settings



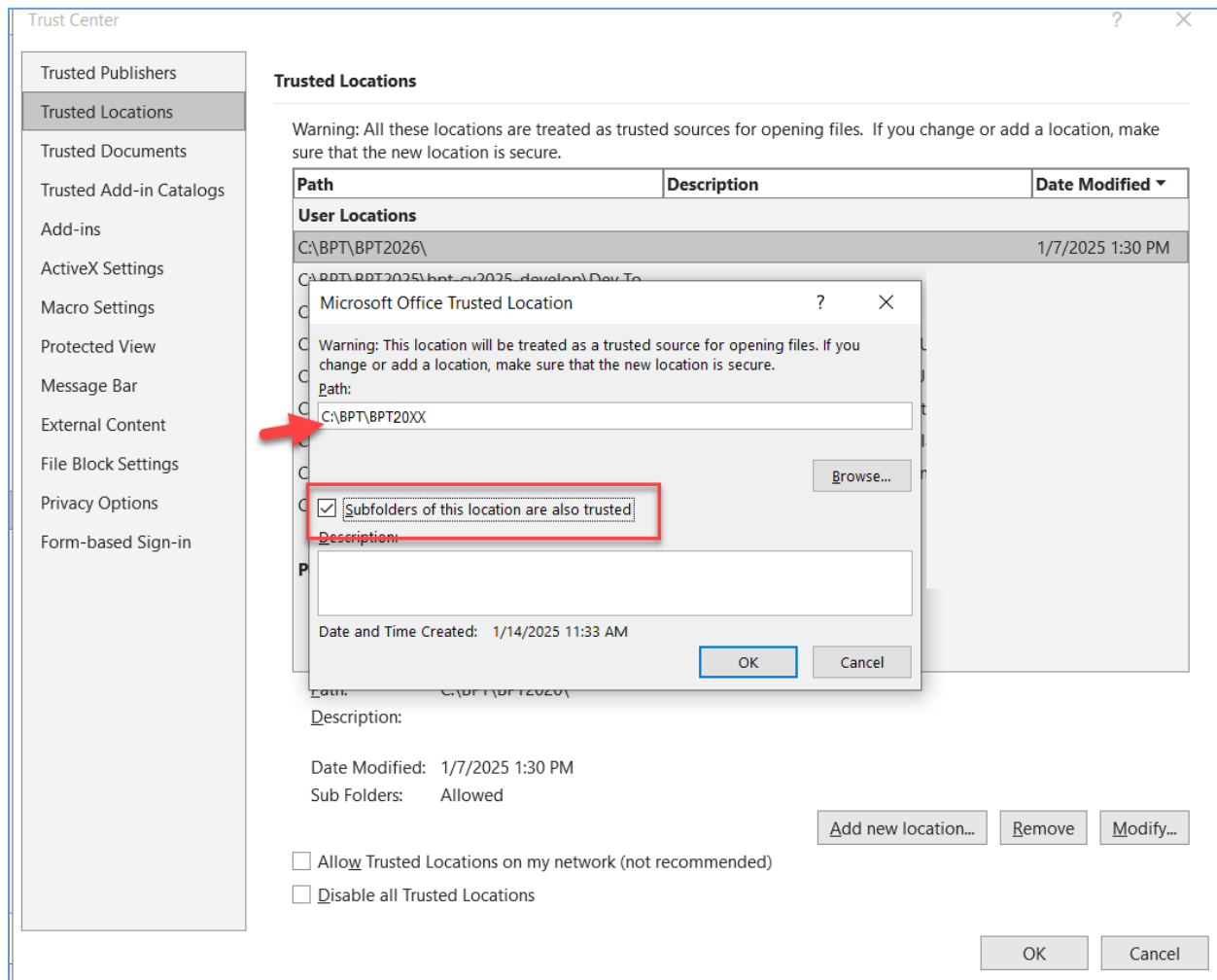
1.2.2.2 BPT File Trusted Location Setting

If the BPT Add-in is not loading due to security settings that are blocking the macro, you may need to set the BPT file location as a “Trusted Location”.

1. To enable this setting File>Options>Trust Center Settings>Macro Settings Click File>Options>Trust Center>Trust Center Settings>Trusted Locations
2. Click ‘Add New location”.
3. Add the location of “C:\BPT\BPT20XX’ by selecting the Browse button
4. Select the checkbox “Subfolders of this location are also trusted”
5. Click ‘OK” to close the Popup. The location should be displayed in the Trusted Locations Path.
6. Click “OK” to close the Options.

CY2026 Bid Pricing Tool Technical Instructions

Figure 3 – Trusted Locations



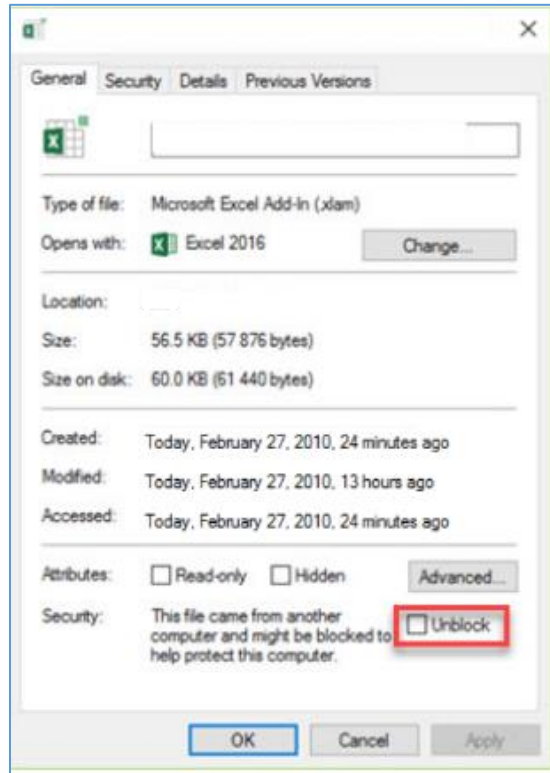
1.2.2.1 Unblock the BPT File Property

Another option if you do not have the ability to add the Trusted Location, you can unblock the macro.

1. To unblock the files, navigate to the Windows File Explorer to where you saved the BPT files.
2. For each BPT file and Add-in, right click the file and choose “Properties” from the menu.
3. At the bottom of the “General” tab, select the “Unblock” checkbox and click “Ok”. Note: Not all system configurations will have this option displayed.
4. Repeat for the BPT files and Add-in.

CY2026 Bid Pricing Tool Technical Instructions

Figure 4 – Unblock the Macro



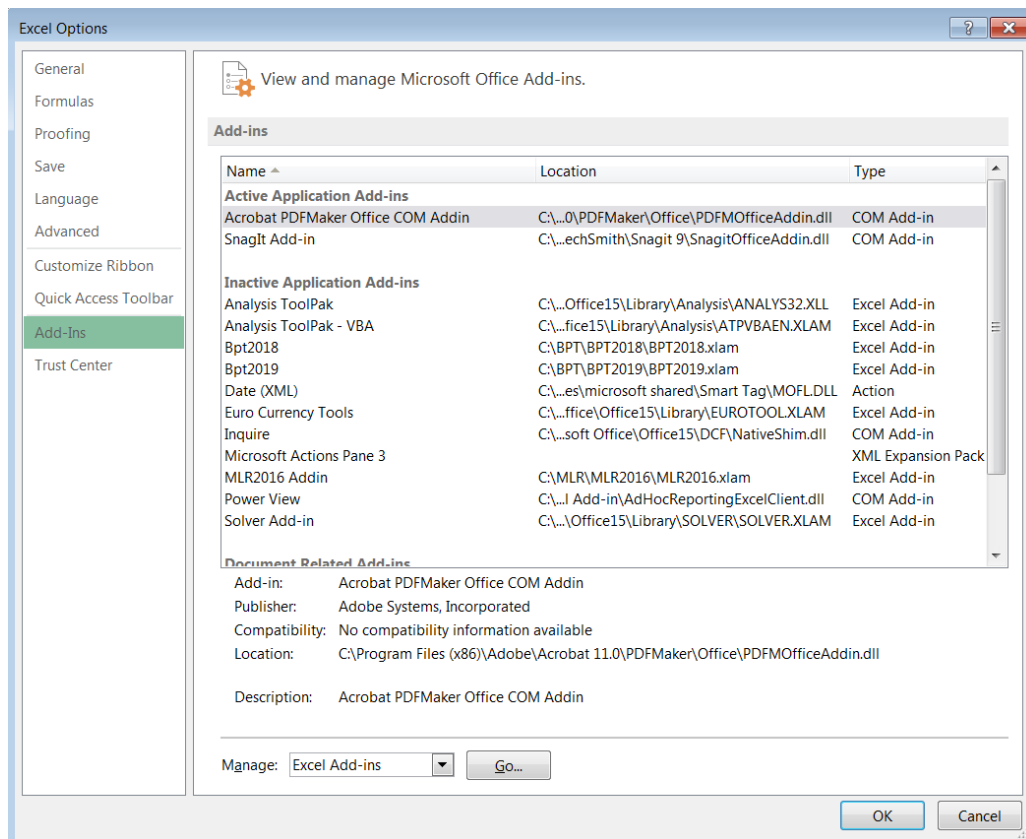
1.2.2.2 Verify the Add-in is enabled.

If the Add-in is still not loading but the macros are no longer blocked, verify the Add-in is enabled.

1. Open the Workbook and go to File>Options>Add-ins>Go
2. On 'Add-ins Available' window - ensure only the 'Bpt20XX' is selected. All other add-ins should be unchecked.
3. Toggle the Bpt20XX by unchecking, save and close the file.
4. Repeat the steps above.

CY2026 Bid Pricing Tool Technical Instructions

Figure 5 – Add- Ins Window



1.2.3 Version Compatibility

You will be able to open and work with multiple BPT files in the same Excel instance. If you want to close a BPT file and open another one, **you should also close Excel and open the next BPT file in a new instance of Excel.** If you encounter any issues when opening a BPT file, then close Excel, go to the Task Manager, delete any other Excel processes, and then open a BPT file in a new Excel window.

Working files for prior years such as CY2025, CY2024 along with CY2026 working files will NOT work properly in the same Excel instance (i.e., window). You must open separate instances of Excel in order to work with a CY2026 working BPT file and a CY2025 working BPT file at the same time.

Note: It is not sufficient to close a CY2025 working BPT prior to opening a CY2026 workbook within the same instance of Excel. The CY2026 workbook MUST be opened in a different instance of Excel by closing Excel before opening the CY2026 workbook. Otherwise you will encounter a “subscript out of range” error. This error will disappear once you close the CY2025 instance and re-open the CY2025 instance. See Figure 2.2.2-A.

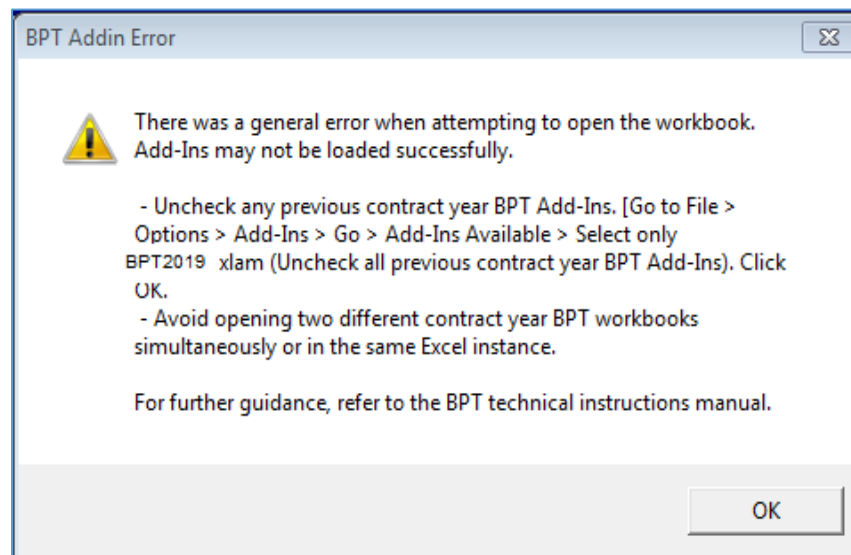
CY2026 Bid Pricing Tool Technical Instructions

You must open the working files for the same contract year in the same Excel instance; otherwise you will receive an error message stating that the BPT Add-in file is read-only because it is already open in another Excel instance.

Note: These restrictions only apply to working versions of BPT workbooks. You will be able to open a read-only file, such as a finalized or backup file (CY2025 or CY2024) and a working file in the same Excel instance.

For returning BPT users (e.g., those that used the CY2025 BPT), you may receive the following error message upon opening the CY2026 BPT for the first time you access the CY2026 BPT. See Figure 6 - BPT Add-in Error.

Figure 6 - BPT Add-in Error



If this error occurs, select file menu > Options > Add-Ins > Manage: Excel Add-Ins then click “Go”. In the Add-Ins dialog box, un-check the “BPT2025” and select BPT2026 and click “Ok”. This will resolve the error when opening the CY2026 BPT thereafter.

For further help with errors when opening the BPT files, see 1.4 Troubleshooting and FAQ.

1.2.4 Data Pre-population

When you use PBP software to download the BPT workbooks, the download process automatically populates (or pre-populates) some of the workbooks’ “General Information” sections (Worksheet 1, Section I) from the PBP. (The “General Information” entered in Worksheet 1 appears in the header sections of all the other worksheets in the BPT workbooks.) Pre-population, however, occurs only once. If pre-populated information in the header section is inaccurate, you can manually update the data in the BPT. The yellow highlighted cells in the header section of Worksheet 1 are unprotected to allow you to change values if necessary.

CY2026 Bid Pricing Tool Technical Instructions

Note: After the data pre-population, any information updated on the HPMS website or PBP will not be automatically reflected in the BPT. You must update the BPT manually to maintain data consistency.

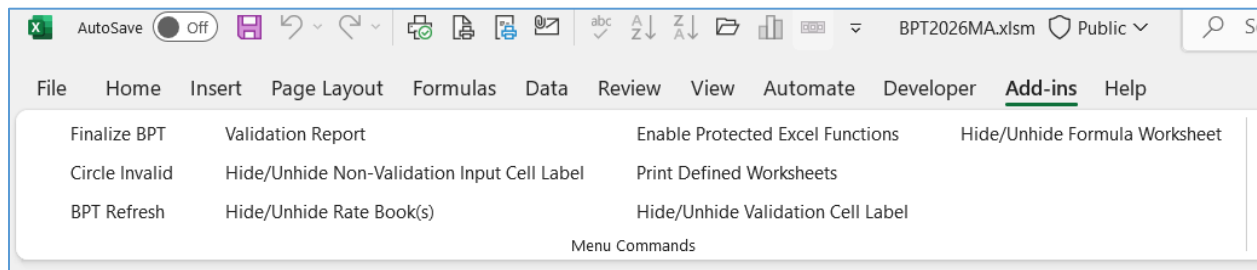
If you download a blank BPT directly from HPMS, the “General Information” section will be blank. It is recommended that you enter this information before entering other data.

1.2.5 BPT Commands

Upon successfully opening a working BPT with the macros enabled, ten BPT-specific functions will appear in the Add-Ins tab. These functions are only available if the Add-Ins is enabled. If you reset the Add-Ins to its default setting, the BPT functions will disappear, and you must close the workbook and reopen to restore them. Clicking on the BPT function names will trigger some of the workbooks’ special BPT-specific commands. You can also invoke these commands from the File menu or using the following short-cut key combinations. See Figure 7 - Add-in Menu Functions.

These functions are located in the Add-In menu on the Toolbar. NOTE: As of CY2026 Icons are no longer part of the Add-in Function text.

Figure 7 - Add-in Menu Functions



Function names:

- Finalize BPT: Ctrl+Shift+S
- Circle Invalid: Ctrl+Shift+C
- BPT Refresh: Ctrl+Shift+R
- Validation Report: Ctrl+Shift+I
- Hide/Unhide Non-Validation Input Cell Label: Ctrl+Shift+L
- Hide/Unhide Rate Book(s): Ctrl+Shift+B
- Enable Protected Excel Functions: Ctrl+Shift+K
- Print Defined Worksheets: Ctrl+Shift+P
- Hide/Unhide Validation Cell Label: Ctrl+Shift+M
- Hide/Unhide Formula Worksheet: Ctrl+Shift+H

1.2.6 Populating the BPT working file

BPT workbooks are the vehicles through which organizations present their plan bids to CMS. Users populate working files by entering required data into specified data-entry fields, and the workbook automatically calculates and displays the results in its calculated fields. (For details on how the workbooks calculate results, see the CY2026 BPT Instructions for MA, PD and MSA workbooks located in HPMS.)

1.2.6.1 Data Entry and Cell Formats

Data entry fields are highlighted in yellow. For most fields, data entry follows Excel’s “General” format, i.e., character input is stored as text and numerical input is stored as a number. The following four fields, however, are numerical fields that the BPT ultimately stores as text.

- Plan ID
- Segment
- Region
- County Code

If data in these fields are entered as numbers, they will display as numbers until the workbook is finalized. (Note: the finalization process (see 1.2.7.1) must be successful for these changes to occur.) To manually enter these fields as text, users should use a leading apostrophe (') and include any leading zero's when entering these values. (For example, to display 030 in the Plan ID field, enter apostrophe, zero, three, zero.) When the “General Information” data is pre-populated from the PBP (see 1.2.4), the formatting automatically inserts a leading apostrophe (') and displays the leading zero's in these fields.

If you copy and paste cells in any of the BPT worksheets, it is recommended that you use Excel’s PASTE SPECIAL feature with the PASTE VALUES or PASTE FORMULAS option. This will prevent overwriting a cell’s predefined format, which can occur when the standard PASTE command is used. Also, do not use Excel’s “Cut” function in the BPT workbooks as it will remove the cell’s predefined formatting.

Note: It is recommended that you use the Delete key instead of the Space bar to delete cell values from the BPT.

1.2.6.2 Cell Validation

The yellow-highlighted data entry fields fall into three categories with respect to cell validation: validation fields, critical validation fields, and non-validation fields. Validation fields have cell-specific rules regarding the types and format of data that can be entered into them; the rules appear in message boxes called cell labels when the cell is highlighted. Because some cell labels partially obstruct the user’s view of the cell, cell label displays can be turned off (see Section 1.2.6.5, “Hide/Unhide Validation Cell Label”) or moved by clicking and dragging.

CY2026 Bid Pricing Tool Technical Instructions

If cell validation rules are not followed, a red circle will appear around the cell. (See Section 1.2.6.3, “Circle Invalid.”) If the user edits the data in the cell to bring into compliance with the rule, the red circle will disappear; however, this does not apply to linked cells. (See Section 1.2.6.10, “Enable Protected Excel Functions”). Users can view a list of all failed validations in a workbook by running a Validation Report. (See Section 1.2.6.4, “Validation Report.”)

Critical validation fields are validation fields whose rules must be followed before the workbook can be successfully finalized. (See Section 1.2.7.1, “Finalization Process.”) Critical validation rules are different for each of the BPT workbooks; they are listed in Appendix A, “Critical Errors.”

Note: Some calculation fields are validation fields. Users cannot modify calculation cells. To address failed validations in calculation fields, users must modify the data-entry cells to which the calculation field formulas refer.

Non-validation fields are data-entry cells that have no validation rules to display. They do not create red circles or messages in the Failed Validation Report.

If the worksheet is hidden, the cells that have validations in the hidden worksheets will not appear in the Validation Report.

1.2.6.3 Circle Invalid Add-in Function

The Circle Invalid function identifies cells that may contain invalid data; it can be invoked by clicking the Circle Invalid function on the toolbar or by pressing Ctrl+Shift+C. This function places a red circle around all failed validations in the workbook. If the user edits the data in a cell to bring into compliance with the rule, the red circle will disappear; however, this does not apply to linked data (See Section 1.2.6.10, “Enable Protected Excel Functions.”). The Circle Invalid function executes automatically upon opening, saving and finalizing a BPT workbook.

Although red circles disappear when corrective data is manually entered into a cell, it is recommended to click the Circle Invalid function frequently to re-validate all the cells in the workbook.

1.2.6.4 Validation Report Add-in Function

The Validation Report function creates a new worksheet that lists all the failed validations in the workbook; it can be invoked by clicking the Validation Report function on the toolbar or by pressing Ctrl+Shift+I. This function creates two reports: the Failed Validation Report and the Active Cell Validation Report.

The Failed Validation report identifies, for every cell in the workbook with validation errors, the worksheet name, cell location, cell value, input message and whether or not the error is a critical error by indicating “PASSED” or “FAILED” in the Critical Error column (FAILED critical errors will prevent the workbook from finalizing). You cannot modify the report, but you can copy and paste its contents into another document.

Note: Only critical errors will display “PASSED” or “FAILED” in the Critical Error column.

CY2026 Bid Pricing Tool Technical Instructions

The Validation Report function will also trigger the Circle Invalid function. If you generate the Validation Report, you will also generate the red circles in the workbooks.

The Active Cell Validation Report assists vision-impaired users who use a screen reader. It reports the validation status (Passed, Failed or No Validation) for the active cell on which the cursor is placed.

The Validation Report worksheet is hidden when you save, close, or finalize a BPT. You can re-generate the report by re-invoking the function.

If a user enters data by linking to another Excel workbook, these links must be refreshed prior to running the Validation Report. (See Section 1.2.6.9, “BPT Refresh.”)

1.2.6.5 Hide/Unhide Validation Cell Label

The Hide/Unhide Validation Cell label function turns off the cell labels (pop-up messages that display a cell’s validation rules) for all validation cells, including input and calculated cells in the workbook; it can be invoked by clicking the Hide/Unhide Validation Cell Label function on the toolbar or by pressing Ctrl+Shift+M. By default, cell labels are turned on for validation cells.

Note: This function controls turning on and off input messages for validation cells only. The cells that do not have validations cell label input messages are controlled by the Hide/Unhide Non-Validation Input Cell Label function. (See section 1.2.6.6 “Hide/Unhide Non-Validation Input Cell Label function.”)

1.2.6.6 Hide/Unhide Non-Validation Input Cell Label Add-in Function

The Hide/Unhide Non-Validation Input Cell Label function turns on the automatic display of cell labels for non-validation cells, which enables screen readers to read the contents of the cell label’s message; it can be invoked by clicking the Hide/unhide Non-Validation Input Cell Label function on the toolbar or by pressing Ctrl+Shift+L. All cells that do not have validations will display a pop-up input message with the cell location and cell label. When you click on a cell, the screen reader will read the cell’s message which indicates whether the cell is an input cell. For example, if this function is invoked and the user clicks on cell G27 in Worksheet 1 of the MA BPT (MA1.III.a (g)), the following message will be read by the screen reader: “G27 Input Cell Annualized Utilization/1000 for Inpatient Facility”. By default, non-validation cell messages do not automatically appear when a BPT file is first opened.

1.2.6.7 Hide/Unhide Rate Book(s) Add-in Function

The Hide/Unhide Rate Book(s) function allows you to hide or unhide the Rates worksheet (MA and MSA BPTs) and the Statutory Rates worksheet (MA BPT only); it can be invoked by clicking the Hide/Unhide Rate Book(s) function on the toolbar or by pressing Ctrl+Shift+B. These worksheets will be hidden in the finalized BPT file. You will be able to copy and paste the data to another document prior to finalization.

CY2026 Bid Pricing Tool Technical Instructions

1.2.6.8 Hide/Unhide Formula Worksheet Add-in Function

The Hide/Unhide Formula Worksheet function allows you to hide or unhide a worksheet which displays the formulas for all formula cells in the BPT file (except for hidden formula cells); it can be invoked by clicking the Hide/Unhide Formula Worksheet function on the toolbar or by pressing Ctrl+Shift+H. The Formula sheet is hidden by default and protected from user modification. These worksheets will be hidden in the finalized BPT file.

1.2.6.9 BPT Refresh Add-in Function

The BPT Refresh function updates a BPT workbook's links to other Excel workbooks; it can be invoked by clicking on the BPT Refresh function on the toolbar or by pressing Ctrl+Shift+R. BPT Refresh automatically executes upon opening or saving a BPT workbook.

Data entered in some cells (independent cells) affects the status of other cells (dependent cells). For example, if Plan Type is "RPPO," then MA Region will be editable (and a drop-down menu will appear); if Plan Type is other than "RPPO," then MA region will not be editable (and "N/A" will appear). If the value of Plan Type is entered in the workbook directly, the status of MA Region will be updated whenever Plan Type is modified. However, if the value in Plan Type is *linked* to an external Excel file and the external file is modified, BPT Refresh must be invoked in order to update the status of MA Region.

The following list describes dependent fields—along with the independent fields they depend on—that require BPT Refresh when links are involved as described above. (For further details about the relationships between these fields, see the line-by-line instructions in the MA and PD BPT Instructions.)

- Plan Type on MA Worksheet 1 Cell G7
 - If the Plan Type is RPPO, the MA Region field is editable; otherwise it is protected and displays N/A.
 - If the Plan Type is RPPO, the MA Benchmark Plan Bid Component (W5, M17) is editable; otherwise the field is protected and displays N/A.
 - If the Plan Type is RPPO, the Enrollee Type (W1, K5) is protected and displays A/B.
- MA-PD indicator on MA Worksheet 1 Cell G8 and Plan ID on Worksheet 1 D6
 - If Plan ID is less than 800 and MA-PD indicator is "No", the MA Bid Summary Plan Intention for target Part D basic premium (W6 R47) is protected and displays a value of "N/A – MA only plan"), and any values in the cells are removed.
 - If Plan ID is less than 800 and the MA-PD indicator is "Yes", MA W6 R47 contains a drop-down list.

CY2026 Bid Pricing Tool Technical Instructions

- If Plan ID is greater than or equal to 800, MA W6 R47 will be protected and display “N/A - EGWP bid”. Part D premium and rebate cells also become protected, and any values in the cells are removed.
- Plan Type on PD Worksheet 1 Cell I6
 - If the Plan Type is PDP, cell F32 on PD Summary (w7) is editable and has a drop-down list displaying values 0.10 and 0.50; for all other plan types, this cell is protected and displays the value 0.10.
 - If the Plan Type is PDP, ED PDP or Fall Back, the Enrollee Type field (w1 I7) is protected. Otherwise, this cell is editable.
- PD Benefit Type on PD Worksheet 1, N6
 - If the PD Benefit Type is EA, PD worksheet 4 is hidden;
 - If the PD Benefit Type is DS, both PD worksheet 4 and 5 are hidden;
 - If the PD Benefit Type is BA, PD worksheet 4 is hidden;
 - If the PD Benefit Type is AE, PD worksheet 5 is hidden.
 - If the PD Benefit Type is DS, PD worksheet 6 columns I, J, K in section II are shaded and protected.
- Use of ISAR factor on MA Worksheet 5 Cell G31
 - If the ISAR factor is “Yes”, cells G39 to G3333 are editable; otherwise these cells are protected.
- MA Plan ID on MA Worksheet 1 Cell D6
 - If the Plan ID is equal to or greater than 800, the employer PMPM input on Worksheet 4, cell R116 is editable; otherwise it is protected.
 - If the Plan ID is greater than or equal to 800, the Overall Gain/(Loss) Margin Level will be white, protected, and display “Contract.” Otherwise field is editable and displays a drop-down list with “Contract,” “Organization,” and “Parent Organization.”
- SNP on MA Worksheet 1 K8 –
 - If the SNP indicator K8 is “Y”, then O8 is editable; and when K8 is “N”, O8 is protected and displays “N/A.”

Note: The BPT Refresh does not run the BPT validation rules. Use the Circle Invalid function or Validation Report function if you want to refresh the red-circle display.

CY2026 Bid Pricing Tool Technical Instructions

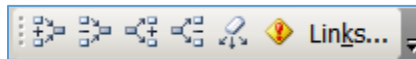
1.2.6.10 Enable Protected Excel Add-in Function

The Enable Protected Excel Functions function allows the user to access a list of Excel functions (Change Link, Trace dependents, Trace precedents, Trace error and Remove all arrows) that are disabled because the BPT worksheets are protected; these functions can be invoked using this BPT feature.

You can invoke this function by clicking the Enable Protected Excel function on the standard Excel toolbar or by pressing Ctrl+Shift+K. The system will then:

1. Display a toolbar under the standard toolbar, See Figure 8 - Protected Excel Function Toolbar:

Figure 8 - Protected Excel Function Toolbar



2. Allow the user to click one of these icons to display the corresponding Excel screen for that function.

You can click the Enable Protected Excel function again to hide this toolbar.

The Change Link function allows you to change the link source using the standard Excel Edit link function. The Trace dependents, Trace precedents, Trace error and Remove all arrows functions are standard Excel functions used for formula auditing and cell tracing. Once enabled, these items function as they do in a standard Excel workbook.

1.2.6.11 Print Defined Worksheets Add-in Function

The Print Defined Worksheets function allows you to print pre-defined worksheets in a BPT; it can be invoked by clicking the Print Defined Worksheets on the Toolbar or by pressing Ctrl+Shift+P. The pre-defined worksheets are:

- MA - Worksheets 1, 2, 3, 4, 6 and the first page of worksheet 5
- PD - All visible worksheets (which varies based on benefit type)
- MSA - Worksheets 1, 2, 4 and the first page of worksheet 3

Note: This function does not print the validation report; it can be printed manually.

1.2.6.12 MA and MSA, County Code Section

County Codes are entered in the following workbook sections:

- MA worksheet 5, rows 39 to 3333 columns B through U
- MSA worksheet 3, rows 39 to 3333 columns B through H

The following macro add-in functions are applicable to these sections:

CY2026 Bid Pricing Tool Technical Instructions

1. The MA and MSA workbooks support up to 3,295 lines of county codes.
2. County codes must be entered in consecutive rows starting with row 39. Row 39 contains the formulas in a blank BPT.
3. **All county codes in Column B for both MA and MSA workbooks must be entered as a 5 digit number preceded by an apostrophe (').** (See Section 1.2.6.1, “Data Entry and Cell Formats.”) “#N/A” errors appear if values are entered incorrectly. You cannot successfully finalize a file if there are errors in the county code field. You must correct these errors to finalize the BPT.
4. When a county code is entered in column B, the macros automatically populate formulas in the following cells:
 - a. Columns C, D and H in the MA workbook.
 - b. Columns C, D, G, and H in the MSA workbook.
5. When a county code is deleted from column B, the macro removes the automatically populated formulas in the cells described above.
6. All county codes are sorted in the finalized file in descending order. (See Section 1.2.7.1, “Finalization Process.”)
7. If the county codes are imported as a batch from another tool and they include spaces or special characters, these spaces and special characters are sorted as non-blank rows. As a result, you may see some blank lines in the finalized file at the top of the county code section. Open the working files, remove these lines, and re-finalize the BPT.
8. For each row in the MA, PD and MSA County Code sections ([MA5.VI.3] and [MSA3.III.2], respectively), these conditions must be met for finalization to be successful:
 - a. If there is a non-zero value in the Projected Member Months field (column E), then there must be non-zero values in the County Code field (column B for MA and MSA) and the Projected Risk Factor field (column F) for the corresponding row.
 - b. If there is a non-zero value in the Projected Risk Factors field (column F), there must be a non-zero number in the County Code field (column B for MA and MSA) in the corresponding row.

1.2.6.13 Undo Add-in Function

The BPT supports the Excel undo functionality with some exceptions. Modifying any of the cells listed below cause the actions/states stored in your undo history to be deleted. This means that after entering, changing, or deleting a value in any of the following cells, you cannot undo your previous actions.

- Plan Type
- MA-PD indicator
- PD Benefit Type
- Use of ISAR factor
- County Codes

CY2026 Bid Pricing Tool Technical Instructions

- Any cell with a drop-down box
- Any cell that has a validation error removed due to a correction in the user entered data

A new undo history begins to compile after each of these cells are modified.

1.2.6.14 Save Add-in Function

There are two save processes available within the BPT: a non-finalized and a finalized save.

A non-finalized save can be invoked by clicking on the Excel Save function on the Quick Access toolbar or by selecting File and then save from the Excel menu. This save process saves any changes you have made to the BPT workbook.

A finalized save occurs when the “Finalize BPT” function is invoked (See Section 1.2.7, “Finalizing the BPT for Submission”). This step is taken when the workbook is complete and ready for upload to HPMS.

1.2.7 Finalizing the BPT for submission

The Finalize BPT function prepares the workbook for submission to HPMS; it can be invoked by clicking the Finalize BPT function on the toolbar or by pressing Ctrl+Shift+S. You must finalize your workbooks before packaging them with the PBP data for upload to HPMS.

Before you finalize a BPT file, do the following:

1. **If you have the Latest add-in, please ensure that it is disabled prior to finalization of the BPT**
2. **Click the Validation Report or Circle Invalid function to check for any critical errors.** If critical errors are not corrected, you will receive an error message and the BPT file will not finalize.

A validation report is included in finalized versions so that the user can view red circle and failed validations after finalization.

1.2.7.1 Finalization Process

When the finalization function is triggered, the system performs the following actions:

- Recalculate the BPT working file.
 - Note: The Excel settings of the BPT include Automatic Calculation of formulas. Users have the ability to change the BPT’s Excel settings, from Automatic Calculation to Manual Calculation, by selecting File>Options>Formulas. However, please note that when a user attempts to finalize the BPT - even if the finalization is unsuccessful due to the failure of critical validations – then the Excel settings of

CY2026 Bid Pricing Tool Technical Instructions

the BPT working file are changed back to Automatic Calculation. The Automatic Calculation is reset during any attempted finalization (whether successful or not).

- Check the required fields—certain fields (e.g., “Contract Number”) must be entered for finalization to be successful; these fields are listed in Appendix B, “Required Fields”.
- Check the critical validations—critical validation fields must comply with their validation rules for the finalization process to be successful; the fields are listed in Appendix A, “Critical Errors”. To locate critical errors, create and view a Validation Report; the critical errors display “PASSED” or “FAILED” in the Critical Error column. All critical errors must be corrected for a file to be successfully finalized.
- Save the working file.
- Create a backup file—this is a read-only file that contains the same data as the working file; it can be used to restore data in a working file. (See **Section 1.3.7**, “Use the Backup File to Restore a Prior Version of the BPT.”)
- Create an XML file – These files are created upon successful finalization of a BPT.
 - The XML filename will appear in the following format: Contract Number, Plan ID, Segment ID, and Workbook Type.
 - Example: H1234123001MA.xml
- The XML file is not to be modified after finalization of the BPT and must be uploaded alongside the finalized BPT .xlsx file of the same name.
- Create a finalized file with the following features:
 - Designated fields (Plan ID, Segment ID, Region, County Codes) are padded with a leading apostrophe and leading zero’s to display the required number of digits. For example, if you entered 2 for Plan ID, the finalized file contains ‘002 (See Section 1.2.6.1, “Data Entry and Cell Formats”).
 - All PD worksheets display in the finalized file, but only the applicable worksheets based on the PD Benefit type contain data. For example, if you selected BA as the Benefit type, and entered data in PD Worksheet 5, and then later change the Benefit type to AE, the data entered in Worksheet 5 will be deleted. (For further information on which worksheets are applicable for which PD Benefit Types, see the Part D bid instructions).
 - County Codes ([MA5.VI.3] and [MSA3.III.2]) are sorted in descending order. Note: The data in the working file and the backup file retains the original (pre-sorted) order.
 - During finalization, a “timestamp” footnote is added within the finalized BPT. (MA WS6 cell B57, PD WS7 cell B49, MSA WS4 CELL E69)
 - Formulas are removed in the finalized file. Formulae in the working file and the backup file remain.

CY2026 Bid Pricing Tool Technical Instructions

- PD Region [PD1.I.10] is saved as “N/A” in the finalized file if PD Region in the working file is left blank. The region field in the working BPT remains blank.
- Red circles display for cells that do not pass validation rules. Note: You can finalize the file if the red circled cell is not one of the critical errors. A list of critical validations for each workbook is in Appendix A, “Critical Errors.”
- Rate sheets are hidden. In the working file you can still unhide the Rate sheets as needed.
- A Validation Report is available for the user to view red circle and failed validations.
- The Working Text Box is removed from the finalized file (MA Worksheet 6 and PD Worksheet 7) but remains in the working file and the backup file.
- All data in H25:H64 and M25:M64 on MA Worksheet 3 will be removed during the finalization process. Data will remain in the working and backup versions.
- The finalized file only contains the BPT worksheets, the BPT Information Sheet and the splash screen.

1.2.7.2 File Naming Convention

Finalized BPT workbooks are saved using the following standardized naming convention: Contract ID+Plan ID+Segment ID+Workbook Type.xlsx. Use of this convention is a requirement for a successful bid upload to the HPMS and enables the Plan Benefit Package software to validate your bid submission file. //TODO

Example: H1234123001MA.xlsx

Note: Finalized files are saved in the same directory where the working file is located.

Backup files use the same naming convention as finalized files with a timestamp appended to the end of the name: finalized filename + “_Backup_”+YYYY-MM-DD-HH:mm:ss.xlsm

Example: H1111001001MA_Backup_20XX-5-20-100000.xlsm

Note: Back up files are saved in the same directory where the working file is located.

The working file name can be changed at any time. The finalized and backup BPTs are read-only files. If you need to make additional changes prior to bid submission (i.e., prior to upload to HPMS), modify the working file and finalize the BPT again; the previous finalized file will be overwritten. A new backup file will be created; backup files will not be overwritten (as they are time-stamped). (For guidance on using backup files to recover saved data, see Section **1.3.7**, “How to use the backup file to restore a prior version of the BPT.”)

CY2026 Bid Pricing Tool Technical Instructions

1.2.8 Closing the File

When you exit a BPT file by closing the workbook or by closing Excel, the system will check to see if any changes have been made since the last save. If there have been no changes, the file will close. If there have been changes made since the last save, you will receive the following message prompt: “*Any unsaved information will be lost. Would you like to save the changes to your <filename>?*” If you click—

Yes—the BPT file will be saved and closed.

No—the BPT file will be closed without saving changes.

Cancel—the pop-up message disappears and the file will not be closed nor saved.

1.2.9 Password Protection

The BPT is password protected. You may not modify the structure of the BPT workbooks or worksheets. Each data item must be located in its pre-defined cell location for successful processing by the HPMS.

Tampering with the BPT protection, including but not limited to un-protecting and re-protecting any parts of a BPT workbook will permanently compromise the file and prevent successful finalization of that BPT workbook.

If a workbook is compromised in this way, you must discard the compromised BPT, download and complete a new BPT.

1.2.10 Print Defined Workbook Add-in Function

The workbooks contain a BPT-specific Print function that will print a pre-defined set of worksheets (with print areas and page setups pre-designated). (See Section 1.2.6.11, “Print Defined Worksheets.”)

The standard Excel Print function (select File then Print) will print the current worksheet using the BPT-designated print areas and page setups. Multiple worksheets may be printed by clicking multiple tabs while holding down the Ctrl key or the Shift key) and then invoking the standard Excel Print function.

To bypass the BPT-designated print areas and page setup, set these parameters as you would in Excel and then invoke the standard Excel Print function.

1.2.11 New Releases

If necessary, the Centers for Medicare and Medicaid Services may deploy a new version of the BPT Add-in file to update the BPT workbooks. The new version will be made available to the user community through HPMS. HPMS will send an auto-generated email to certain HPMS users to announce that a new BPT Add-in is available for download from HPMS.

If CMS deploys an updated version of the BPT Add-in (BPT2026.xlam) file, you must download this file from the HPMS website. **You must overwrite the existing BPT Add-in with the most**

CY2026 Bid Pricing Tool Technical Instructions

current version in the C:\BPT\BPT2026 folder. If you saved multiple versions of the BPT Add-in to the BPT2026 folder or elsewhere on your personal computer (PC), you may experience technical difficulties with the BPT.

Note: If you receive the BPT add-in file via email and it is saved to your temporary directory as part of the email download process, you must delete it from the temporary directory.

To verify that the BPT workbooks are using the latest version of the Add-in file, compare the version number given during the add-in download process to the version number in the upper right corner of Worksheet 1 of the BPT (e.g., “MA-2026.4” indicates that the BPT is using version 4 of the add-in).

You will need to update all of your BPT workbooks (MA, PD and MSA) with the latest BPT add-in file. If you have finalized a BPT with an old version of the add-in file but not yet uploaded it, you must download the new Add-in file, update the working file, and re-finalize the BPT.

The BPT workbook is updated automatically when first opened after downloading the new BPT Add-in file. When you receive a pop-up message stating that the BPT is out of date, click “OK” and the update process will begin. As part of the update process, a backup version of your previous BPT will be saved to a C:\BPT\BPT2026\Update Backup VersionX folder, where X is the Add-in file version number.

You will not need to transfer any data from one workbook to another to apply a BPT Add-in update. For step-by-step instructions on downloading an add-in file update, see **Section 1.3.3**, “How to Update the BPT Add-In” and **Section 1.3.4**, “How to Update the Add-In for Multiple BPT Workbooks using the Batch Tool.”

1.2.12 Batch Process Tool

The Batch Process Tool is supported in Excel 2016, 2019 and Excel 365 Desktop version only. The Batch Tool is not supported in Excel 2013. BPT does not support the Excel 365 Online version or Excel 365 with Sensitivity label.

A Batch Process Tool is available to assist you with updating, finalizing and checking validation errors for multiple BPT workbooks. The estimated execution time for the process can vary greatly based on your PC’s processing power, the number of workbooks in the batch, the size of each workbook (e.g., MA workbooks with a large number of county codes may experience slower execution time). It is recommended that you initially run a small batch (e.g., five to ten workbooks) to assess the execution time specific to your PC. The Batch Process Tool is available for download from the HPMS Bid Submission module. **You must close all BPT workbooks before running the batch process.** During the batch process an Excel file may open during executions. Do not attempt to close, alter or edit the Excel file until the batch completes its function. Doing so could result in errors while processing the selected batch function. After the batch process is completed, close the Batch Process Tool and any open Excel files before opening a stand-alone BPT file (to avoid potential conflicts between the files).

CY2026 Bid Pricing Tool Technical Instructions

Note: You must have Excel 2016, 2019 or Excel 365 Desktop version installed to use the Batch Process Tool. Reports will be generated in the .xlsx format.

All batch processes will skip (i.e., will not process) the following files if they are selected:

- Non-BPT Excel workbook
- Backup BPT file
- Finalized version of BPT
- Working BPT with different contract year (e.g., CY2025 working file)

Before using the Batch Process Tool, make sure the following boxes are checked: “Trust access to the VBA project object model” (Options>Trust Center>Trust Center Settings>Macro Settings)

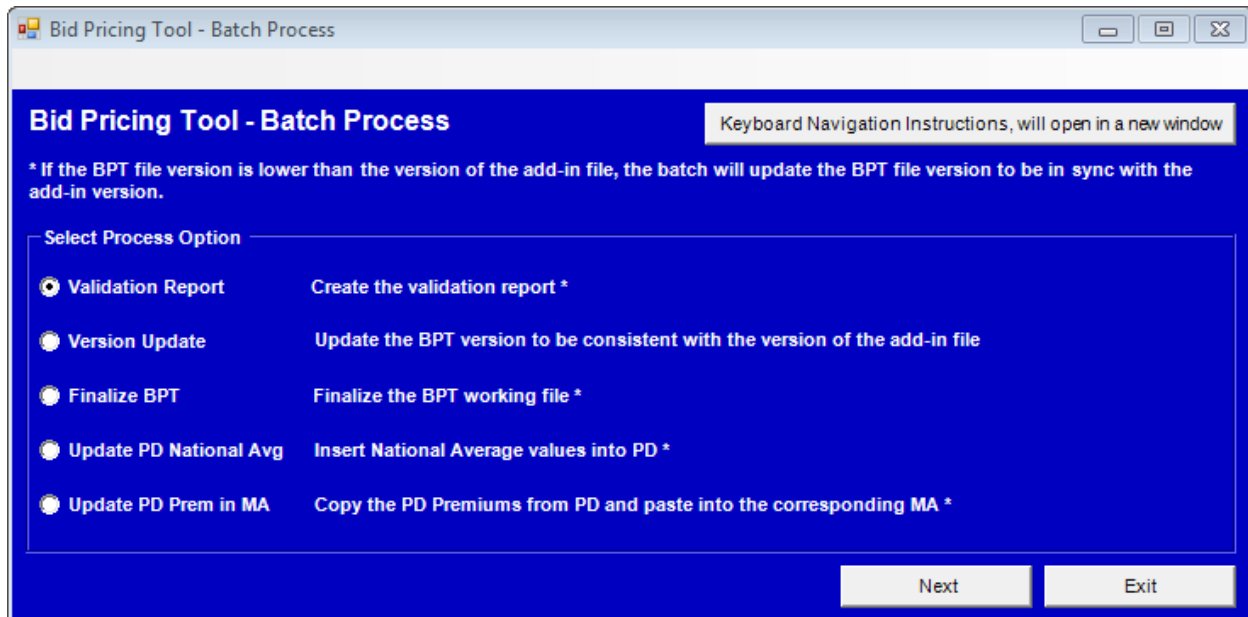
Note: The Batch Process Tool will set the BPT Calculation flag (click File>Options>Formulas) to “Automatic.” To choose a different setting (after the batch process completes), open a stand-alone BPT workbook and manually change the setting.

1.2.12.1 Batch Validation Report

This function will generate validation reports for one or more BPT files. To enable this function, launch the Batch Process Tool, select “Validation Report,” and click “Next.” See Figure 9 - Batch Tool Validation Report. Select the BPT files (with file extension .xlsm) to be processed. The Batch Process Tool will disable all add-in functionalities that may disrupt its execution. The execution status of the batch process will be displayed in the Batch Process Tool status window. A success or failure message is displayed for each of the BPT workbooks. At the end of the process, you will receive a message confirming the number of files that passed, failed or were not processed. The report will be saved in the same folder from which the BPT files were selected. The report is saved in the .xlsx format. The report’s Index Page lists the filenames, Contract IDs, Plan IDs, and Segment IDs associated with the report. A hyperlink next to each file will take you to the corresponding report worksheet.

CY2026 Bid Pricing Tool Technical Instructions

Figure 9 - Batch Tool Validation Report



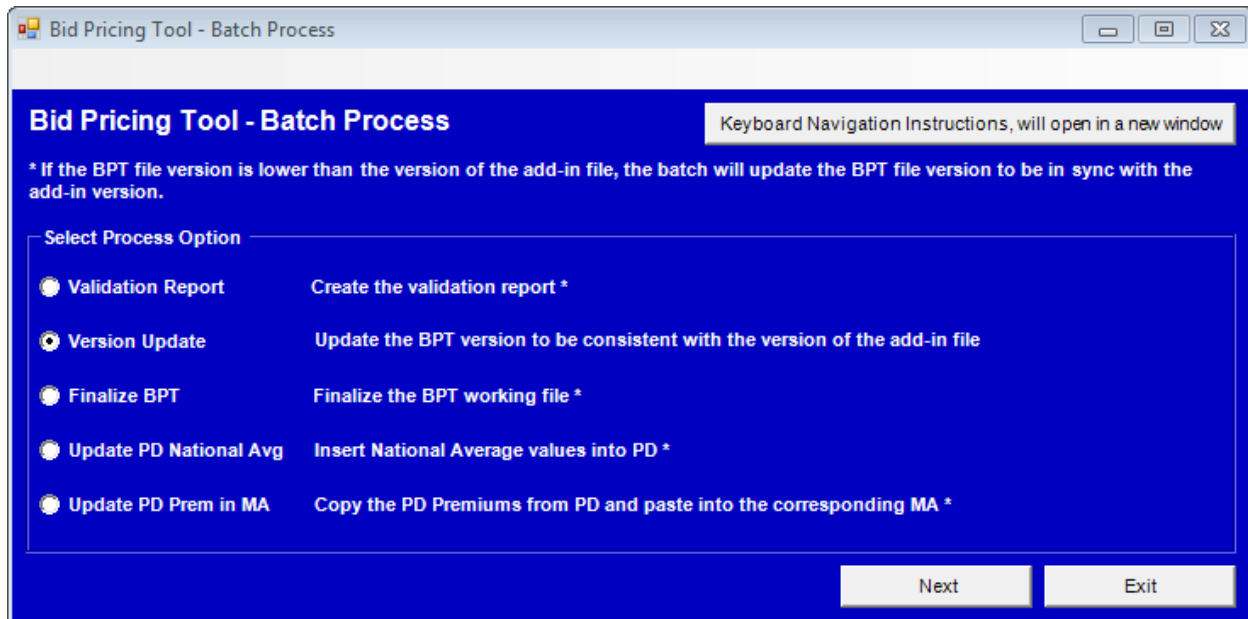
Note: If the BPT files selected to be processed were created with an older Add-in file version than the batch process uses, the files will be updated first before being processed by the batch. (See Section 1.2.12.2, "Batch Update Process.")

1.2.12.2 Batch Update Process

If a new version of the BPT Add-in is downloaded from HPMS, the Batch Process Tool will allow you to update all of your working BPT files to the latest BPT add-in version. To enable this function, launch the Batch Process Tool, select the "Version Update" option, and then click "Next." See Figure 10 - Batch Tool Version Update. Select the BPT files (with file extension .xlsm) to be updated with the new version of the BPT add-in, and then click "Update" to start the batch process. The Batch Process Tool will disable all add-in functionalities that may disrupt its execution. The execution status of the batch process will be displayed in the Batch Process Tool status window. A success or failure message is displayed for each of the BPT workbooks. If any updates fail, an associated error message will be displayed. When the process is complete, you will receive a message indicating the number of files that passed, failed or were not processed. The updated files will be saved in the same folder from which they were selected. (For further instructions, see **Section 1.3.4**, "How to Update the Add-In for Multiple BPT Workbooks Using the Batch Tool.")

CY2026 Bid Pricing Tool Technical Instructions

Figure 10 - Batch Tool Version Update



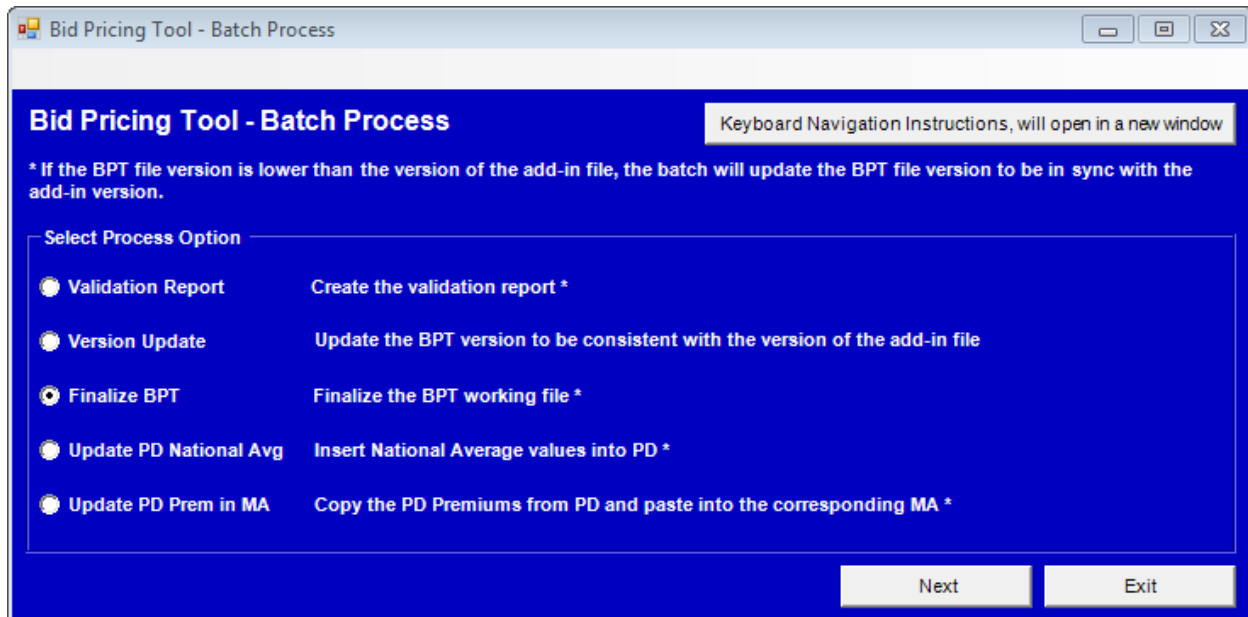
To verify that the BPT workbooks are using the latest version of the Add-in file, compare the version number given during the add-in download process to the version number in the upper right corner of the BPT worksheets (e.g., "MA-2026.1" indicates that the BPT is using version 1 of the Add-in).

1.2.12.3 Batch Finalize Process

You can use the Batch Process Tool to finalize multiple BPT workbooks. Launch the Batch Process Tool, select "Finalize BPT," and then select the BPT files (with file extension .xlsm) to be finalized; click "Finalize" to start the batch process. During the process, the execution status will display in the Batch Process Tool status window. The Batch Process Tool will disable all add-in functionalities that may disrupt its execution. A success or failure message will display for each of the workbooks processed, and an error message will display for each workbook that fails finalization. When the process is complete, you will receive a message indicating the number of files that passed, failed or were not processed. The finalized files will be saved in the same folder from which they were selected.

CY2026 Bid Pricing Tool Technical Instructions

Figure 11 - Batch Tool Finalize BPT



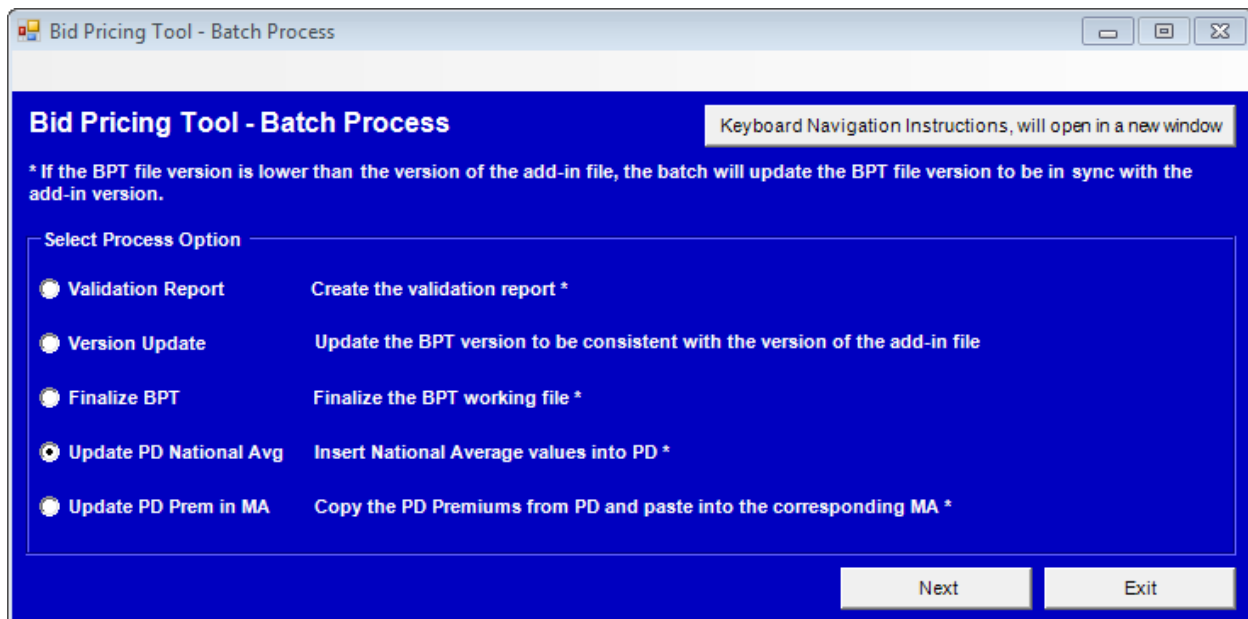
Note: If the BPT files selected to be finalized are at a lower version of the add-in file, the files will be updated first and then finalized.

1.2.12.4 Batch Update PD National Average Process

You can use the Batch Process Tool to update the PD “National Average Monthly Bid Amount” [PD7.III.2] in multiple PD workbooks. Launch the Batch Process Tool and select the “Update PD National Average” option. See Figure 12 - Batch Tool Update PD National Avg. In the two input fields, enter the “National Average Monthly Bid Amount” [PD7.III.2] and the “Base Beneficiary Premium” [PD7.III.3] and then select the PD BPT files (with file extension .xslm) to be updated; click the “Update National Avg” button to start the batch process. During batch processing, the system will write the two input values into the selected PD files.

CY2026 Bid Pricing Tool Technical Instructions

Figure 12 - Batch Tool Update PD National Avg



The Batch Process Tool will disable all add-in functionalities that may disrupt its execution. The execution status of the batch process will be displayed in the Batch Process Tool status window. A success or failure message is displayed for each of the BPT workbooks. If any workbooks fail to be finalized, an associated error message will display. When the process is complete, you will receive a message indicating the number of files that passed, failed or were not processed.

A report will be generated and saved in the same folder from which the PD files were selected. The report will be generated in the .xlsx format. In the report, you will see the file names for all files that were successfully updated. The report will also display the “Basic Part D Premiums, Rounded” [PD7.III.5] before and after the updates for each workbook.

This batch process will ignore the following files if selected:

- Non-BPT Excel workbook
- MA and MSA workbook types
- Backup BPT file
- Finalized BPT file
- Working BPT with different contract year (e.g., CY2025 working file)
- PD workbooks with blank Contract Number, Plan ID values.

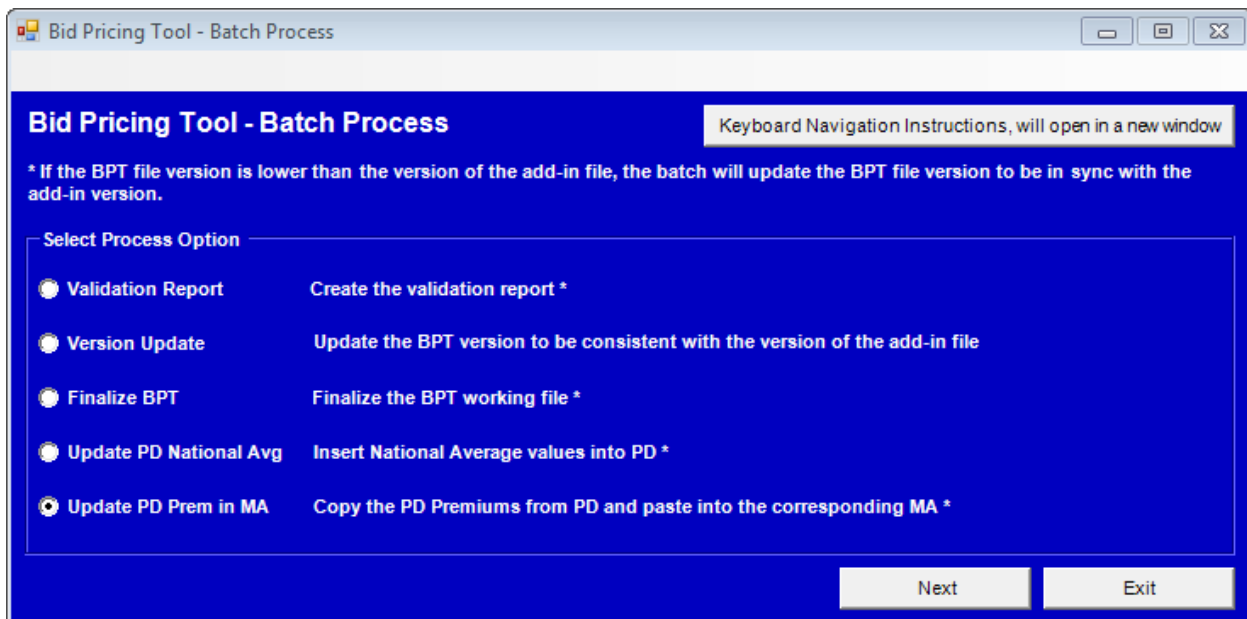
The report will list ignored files in the section titled, “The following files were not updated because they are not valid CY2026 PD files or contain blank Contract and Plan IDs”.

CY2026 Bid Pricing Tool Technical Instructions

1.2.12.5 Batch Update MA BPT with PD Premiums

You can use the Batch Process Tool to copy the Basic and Supplemental Rounded PD Premiums ([PD7.III.5] and [PD7.III.7], respectively) from multiple PD workbooks into the corresponding MA workbooks with the same Contract-Plan-Segment IDs ([MA6.III.C.7a] and [MA6.III.C.8a], respectively). To do this, launch the Batch Process Tool, select “Update MA with PD Premiums,” and then select the PD workbooks to be used in the update. See Figure 13 - Batch Tool Update Prem in MA. On the bottom file selection window, select the MA workbooks that you want to update with the PD premiums. Click the “Update MA with PD Premiums” button to start the batch process. The batch process will copy premium values from the PD workbook(s) into the corresponding MA workbook (i.e., the MA file with the same Contract Number, Plan ID and Segment ID).

Figure 13 - Batch Tool Update Prem in MA



The Batch Process Tool will disable all add-in functionalities that may disrupt its execution. The execution status of the batch process will be displayed in the Batch Process Tool status window. A success or failure message is displayed for each of the BPT workbooks. If any workbooks fail to be finalized, an associated error message will display. When the process is complete, you will receive a message indicating the number of files that passed, failed or were not processed.

A report will be generated and saved in the same folder from which the MA files were selected. The report will be generated in the .xlsx format. The report will list the PD workbooks—and the corresponding MA workbooks—that were successfully updated. In each processed MA workbook, you will see the PD Premium values ([MA6.III.C.7a] and [MA6.III.C.8a]) both before and after the updates. Duplicate MA workbooks (i.e., one with the same Contract, Plan and Segment ID as another MA workbook) will also be updated with the PD premiums and displayed in the top section of the report. The following files will be ignored by this process:

CY2026 Bid Pricing Tool Technical Instructions

- Duplicate PD workbooks (i.e., one with the same Contract, Plan, and Segment ID as another PD workbook that has already been processed) will not be processed and will be displayed in the report under the section titled: “The following PD files were not processed because they are a duplicate to a processed PD file”. That is, the PD premiums in the duplicate PD BPT will not be copied into the corresponding MA BPT via the Batch Process Tool.
- MA workbooks that do not match any selected PD workbooks (based on Contract Number, Plan ID and Segment ID) will not be processed and will be displayed in the section titled: “The following MA files were not matched to the selected PD source files”. That is, the PD premiums in the MA BPT will not be updated / changed during the batch process.
- PD workbooks that do not match any selected MA workbooks (based on Contract Number, Plan ID and Segment ID), will not be processed and will be displayed in the section titled: “The following PD files were not matched to the selected MA target files”. That is, the PD premiums in the PD workbook will not be copied into any MA workbooks during the batch process.

The system will also ignore the following files; they will be reported in the section titled: “The following files were not processed because they are not valid CY2026 MA or PD files”:

- Non-BPT Excel workbooks
- MSA workbook
- Backup BPT files
- Finalized BPT files
- Working BPT files with different contract year (e.g., CY2026 working files)
- MA or PD workbooks with blank Contract Number, or Plan ID values.

1.2.12.6 Batch Process Termination Handling

If the Batch Process Tool is terminated abnormally before the process is completed, you must close all Excel instances (i.e., windows) before you re-run the batch process. (See Section 1.3.8, “How to re-start the Batch process if it is abnormally terminated” for detailed instructions)

1.2.13 Accessibility Features

The Bid Pricing Tool provides features that allow you to work with BPT files using a keyboard and screen reader. See details in the sections below for features applicable to the workbooks and the Batch Process Tool.

1.2.13.1 Workbook Accessibility Features

The following are accessibility features available for the BPT workbooks:

CY2026 Bid Pricing Tool Technical Instructions

- Default location for active cursor upon opening a workbook – The active cursor is located in the worksheet's title cell (MA W1 B2, PD W1 B2, MSA W1 B2). This allows you to have the same starting point every time the document is opened. It also allows screen reader users to know the worksheet title information upon opening a BPT file.
- Tabbing through active input cells – While using a working BPT file, you can use the Tab key to navigate directly to the editable input cells (yellow-shaded cells).
- BPT-specific functions – Alternative text and shortcut keys are available for you to access the specific functions available in the standard Excel toolbar. See Section 1.2.5 for more information.
- Validation Report – The validation report lists all failed validations. It allows you to use the screen reader to access failed validation information without relying on the red circles displayed on the workbooks. See Section 1.2.6.4 for more information.
- Hide/Unhide Non-Validation Input Cell Label – This function assists vision-impaired users who use screen readers when working with BPTs. It allows you to turn on or off the input cell labels (input messages that display the cell labels) for all non-validation cells. See Section 1.2.6.6 for more information.
- Hide/Unhide Validation Cell Label - This function assists vision-impaired users who use screen readers when accessing validation cells, including both input cells and protected formulae cells. It allows you to turn on or off the input cell labels (input messages that display the validation rules) for all validation cells. See Section 1.2.6.5 for more information.
- Hide/Unhide Formula Worksheet – This function assists vision-impaired users who use screen readers when accessing cell formulae. It allows you to hide or unhide a worksheet that displays formulae for all formula cells. See Section 1.2.6.8 for more information.

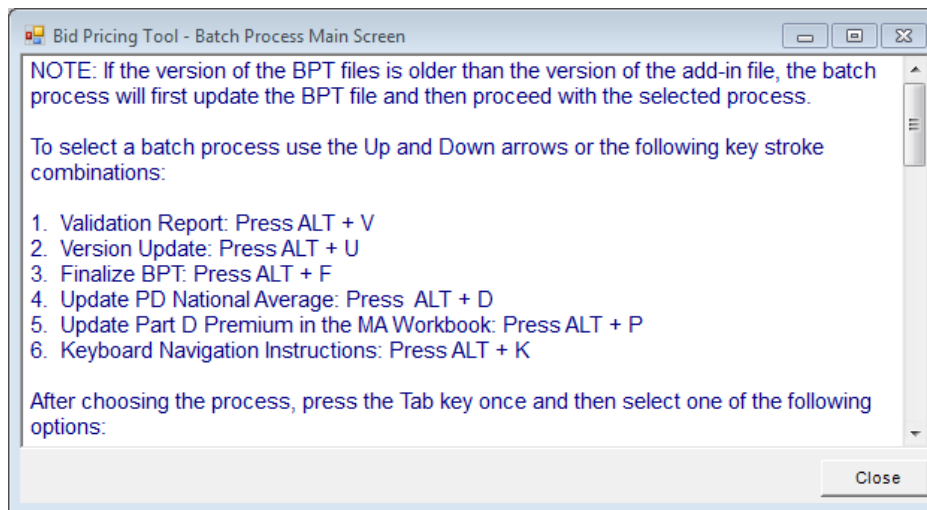
1.2.13.2 Batch Process Tool Accessibility Features

The following are the accessibility features available for the Batch Process Tool:

- When you first open the Batch Process Tool, the cursor defaults to the Keyboard Navigation Instructions button, which displays instructions about navigating throughout the application using the keyboard. See Figure 14 - Keyboard Navigation Instructions.
- The Keyboard Navigation Instructions contain the following information:
NOTE: If the version of the BPT file is older than the version of the Add-in (BPT2026.xlam) file, the batch process will first update the BPT file and then proceed with the selected process.

CY2026 Bid Pricing Tool Technical Instructions

Figure 14 - Keyboard Navigation Instructions



To select a batch process, use the Up and Down arrows or the following key stroke combinations:

1. Validation Report: Press ALT + V
2. Version Update: Press ALT + U
3. Finalize BPT: Press ALT + F
4. Update PD National Average: Press ALT + D
5. Update Part D Premium in the MA Workbook: Press ALT + P
6. Keyboard Navigation Instructions: Press ALT + K

After choosing the process, press the Tab key once and then select one of the following options:

1. To go to the next window for the process selected, press ALT + N
2. To exit the tool, press ALT + X

If the Next option is chosen, the next window will default the cursor on the Keyboard Navigation Instructions. To execute the process for the target file or files, conduct the following steps:

1. Press the Tab key twice to focus on the Select Folder section
 - a. For the PD National Average process
 - i. Press the Tab key once to populate the National Average Monthly Bid Amount
 - ii. Press the Tab key once again to populate the Base Beneficiary Premium
 - iii. Press the Tab key once again to focus on the Select Folder section

CY2026 Bid Pricing Tool Technical Instructions

- b. For the Update MA with PD Premiums process
 - i. Press the Tab key twice to focus on the PD Select Folder section
 - ii. Use the Up and Down arrows and the Enter key to navigate to the target parent and subfolder
 - iii. Press the Tab key once to focus on the Select File section
 - iv. Press the Tab key to select the file or files
 - v. Press the Tab key twice to focus on the MA Select Folder section
2. Use the Up and Down arrows and the Enter key to navigate to the target parent and subfolder
3. Press the Tab key once to focus on the Select File section
 - a. Press the Tab key twice to return to the first screen of the tool
 - b. Press the Tab key three times to exit the tool
4. Select the file or files to be processed by using the Up and Down arrows and pressing the Spacebar to highlight the file
5. Press the Tab key once and press the Enter key to execute the process

Once the process is complete, a dialog box will pop up and provide a summary of the files that were successfully or unsuccessfully processed. To view the Debug log or report, select “Yes.” To exit the dialog box, select “No.” Selecting “No,” will display the recent process screen. At this point, the same process can be run by following the steps above, another process can be run by pressing Alt + R, or the tool can be exited by pressing Alt + E.

1.3 How To...

1.3.1 Download a Blank Stand-alone BPT Workbook

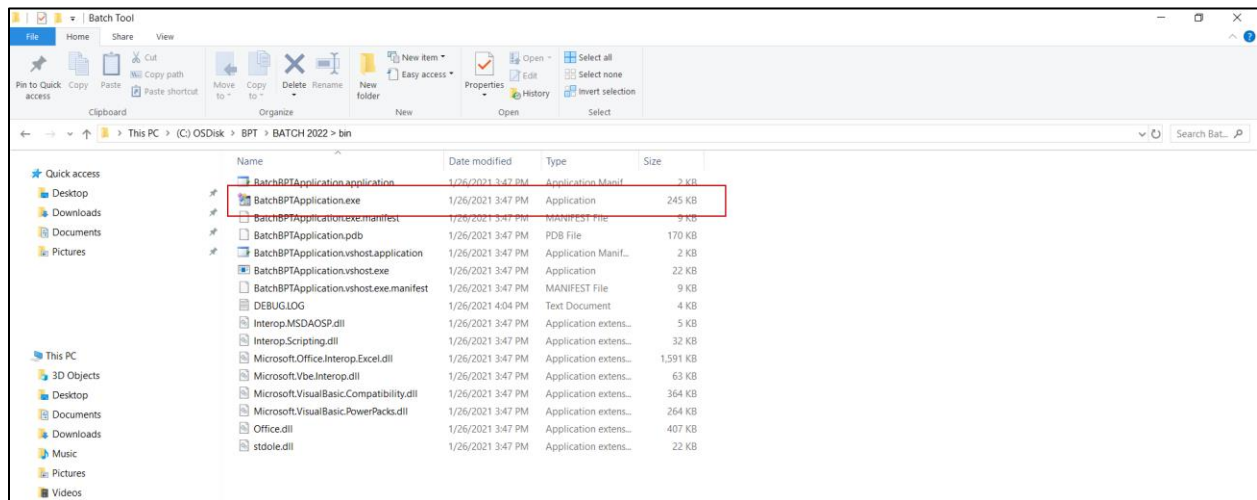
1. Go to the HPMS Website and select Plan Bids > Bid Submission > CY 2026 > Download> Generic BPT Software.
2. Select the Add-in and required BPTs.
3. Click Download.
4. When prompted to “Save” or “Run” the download file, choose “Save” and select a folder in your directory.

CY2026 Bid Pricing Tool Technical Instructions

1.3.2 Download and Launch the Batch Process Tool

1. Create a directory on your workstation to save the batch tool, e.g., C:\BPT\BATCH2026. For Microsoft 365, the Desktop version must be used to download the batch to the C:\.
2. If you have previously downloaded the batch tool, remove the older version prior to downloading the newer version by deleting any files in the chosen directory.
3. Go to the HPMS Website and select Plan Bids > Bid Submission > CY 2026 > *Download Bid Software*.
4. Select “BPT Batch Tool”.
5. Click the ‘Download’ button.
6. When prompted with “Run”, “Save”, “Cancel” the file "BatchApplication.zip", choose Save and select your chosen directory to save the file on your computer.
7. Double-click the left mouse button on the "BatchApplication.zip" file name to open the zip file. Extract the files within the selected directory.
8. Double-click the left mouse button on "BatchBPTApplication.exe" file to launch the batch application. Do not click on the other supporting files in the folder other than the BatchBPTApplication.exe. **See Figure 15.**

Figure 15 - Batch Tool Executable File



1.3.3 Update the BPT Add-In

1. In Windows Explorer, navigate to the C:\BPT\BPT2026 folder.
2. Delete the existing BPT2026.xlam file if applicable.
3. Go to the HPMS Website and select Plan Bids > Bid Submission > CY 2026 > *Download Bid Software*.
4. Select “BPT Add-in & Spreadsheets”.

CY2026 Bid Pricing Tool Technical Instructions

5. Read the instructions and click the 'Download' button to begin the process.
6. Save the file in the **C:\BPT\BPT2026** folder.
7. Open a BPT and select "Enable Macros". (This one is applicable only if Macro security is set to "Disable all macros with notification".)
8. Click "OK" when you see the following message: *"The current version of this BPT file is version x. This is not the most update to date version. Updating to version y."*
9. Verify that the BPT has been updated to the newer version by checking the version number in the upper right hand corner of Worksheet 1: cell N3 (for PD workbooks), cell Q3 (for MA workbooks) or cell P3 (for MSA workbooks). The number after the period reflects the current version (e.g., MA-2026.1 indicates the BPT is using version 1 of the Add-in).

1.3.4 Update the Add-In for Multiple BPT Workbooks Using the Batch Tool

1. Double-click the BPT Batch Process icon or the BPT2026 BatchProcess.exe file name to start the application (after downloading the batch file per Section 1.3.2, above).
2. On the Select Process Option screen, select "Version Update".
3. Click "Next".
4. Using the files search window, locate the folder where you saved the BPT workbooks (i.e., the ".xslm" files).
5. Select the workbooks to update. (Use the Shift key or the Ctrl key to select multiple files.)
6. Click "Update".
7. Review success or failure messages for the selected workbooks.
8. Verify that the workbooks have been updated to the newer version by checking the version numbers in the upper right hand corner of Worksheet 1: cell N3 (for PD workbooks), or cell Q3 (for MA workbooks) or cell P3 (for MSA workbooks).

1.3.5 Finalize an Individual BPT Workbook

1. Open a completed BPT workbook.
2. Select "Enable Macros" when prompted. (Only applicable if Macro security is set to "Disable all macros with notification".)
3. Invoke the Finalize BPT function by clicking the Finalize BPT function name on the tool bar, selecting "Finalize BPT" from the File menu, or pressing Ctrl+Shift+S.
4. If you receive any critical validation error messages, you must resolve the errors before attempting to re-finalize your BPT. (See Section 1.2.7.1, "Finalization Process" for more detail on the finalization process.)
5. Verify that the working file is saved in the designated folder and that the finalized backup files are created in the same folder.

1.3.6 Finalize Multiple BPT Workbooks Using the Batch Tool

1. Double-click the BPT Batch Process icon or the BPT2026 BatchProcess.exe file name to start the application (after downloading the batch file per Section 1.3.2, above).
2. On the Select Process Option screen, select “Finalize BPT”.
3. Click “Next”.
4. Using the files search window, locate the folder where you saved the BPT workbooks (i.e., the “.xlsm” files).
5. Select the workbooks to update. (Use the Shift key or the Ctrl key to select multiple files.)
6. Click “Finalize”.
7. Review success or failure messages for the selected BPTs.
8. Verify that the working files are saved in the designated folder and that the finalized and backup files have been created and saved in the same folder.

1.3.7 Use the Backup File to Restore a Prior Version of the BPT

If the working version of the BPT has been corrupted, or you need to roll back to a prior version of your BPT, restoring a backup version of your BPT may be necessary.

1. In Windows Explorer, locate the backup file in the same directory where the working file is saved.
2. Right-click on the backup file name.
3. Select “Rename” from the menu.
4. Remove the word Backup from the file name and click enter.
5. Open the file, verify that the Add-in has loaded and the file is editable.

1.3.8 Re-start the Batch Process if it is Abnormally Terminated

1. Save and close any open non-BPT Excel workbooks.
2. Press Ctrl+Alt+Delete to launch the Task Manager, select the Processes tab, and then click the “Image Name” column to sort the processes names.

CY2026 Bid Pricing Tool Technical Instructions

3. Select EXCEL.EXE and click the “End Process” button. If more than one EXCEL.EXE process is found, repeat this step to end all the EXCEL.EXE processes.
4. Close the Task Manager.
5. Double click the BPT Batch Process application icon or the BPT2026 BatchProcess.exe file name to re-start the Batch Process.

1.3.9 Update PD National Averages in Multiple PD files

1. Double click the BPT Batch Process icon or the BPT2026 BatchProcess.exe file name to start the application (after downloading the batch file per Section 1.3.2, above).
2. On the Select Process Option screen, select “Update PD National Average”.
3. Click “Next”.
4. Enter values in the input fields for the National Average Monthly Bid Amount and the Base Beneficiary Premium.
5. Using the files search window, navigate to the location where you saved PD workbook (.xlsm) files.
6. Select the PD files. You can use the Shift or Space key to select multiple files.
7. Click the “Update PD National Average” button.
8. Review success or failure messages for the selected BPTs.
9. After the process completes, verify that the PD files are updated correctly. A report will be available in the same folder where the PD files are located.

Also, see Section 1.2.12.4, “Batch Update PD National Average Process.”

1.3.1 Update Multiple MA Files with PD Premiums

1. Double click the BPT Batch Process icon or the BPT2026 BatchProcess.exe file name to start the application.
2. On the Select Process Option screen, select “Update PD Premiums in MA”.
3. Click “Next”.
4. Using the top files search window, navigate to the location where you saved PD workbook (.xlsm) files.
5. Select the PD files. You can use the Shift or Space key to select multiple files.

CY2026 Bid Pricing Tool Technical Instructions

6. Using the bottom files search window, navigate to the location where you saved MA workbook (.xlsm) files. Note: The MA files should match to the PD files selected above (same Contract Number, Plan ID and Segment ID).
7. Click the “Update PD Premiums in MA” button.
8. Review success or failure messages for the selected BPTs.
9. After the process completes, verify that the MA files are updated correctly. A report will be available in the same folder where the MA files are located.

Also, see Section 1.2.12.5, “Batch Update MA BPT with PD Premiums.”

1.4 Troubleshooting and FAQ

1.4.1 Problems with the Add-In File

If you are having difficulty opening, saving or finalizing a BPT, check to see if more than one copy of the CY2026 Add-in file is saved on your PC. To ensure you only have the latest copy of the CY2026 Add-in file stored in the correct location, perform the following:

1. Delete all BPT2025.xlam files saved in C:\BPT\BPT2025
2. Download the BPT2026.xlam file from the HPMS website and save it in the C:\BPT\BPT2026 folder. (See Section 1.2.1.2, “Installing the Add-in File.”)
3. Confirm that the macro security setting is set to “Disable all macros with notification”.
 - a. Open an Excel window.
 - b. Click File>Excel Options>Trust Center>Trust Center Settings>Macro Settings.
 - c. Verify that the macro setting is “Disable all macros with notification”.
 - d. Close the Excel window.
4. Confirm that the Add-in is unloaded properly.
 - a. Open an Excel window.
 - b. Click File>Excel Options>Add-ins>”Go”
 - c. Verify that any prior year CY add-ins are unchecked. (i.e.: CY2025 and CY2024).
 - d. Close the Excel window.
5. Close all Excel windows on your PC.
6. Launch the Task Manager, select Processes tab, select EXCEL.EXE and click “End Process” if applicable. Repeat for each instance of EXCEL.EXE.
7. Confirm that there is only one BPT add-in on the PC.
 - a. Click “Start”, select “Search”, and then the “For Files or Folders” option.
 - b. Enter BPT2026.xlam in the “Search” for “Files and Folders” name box.
 - c. Select Local Hard Drive C: in the Look In dropdown box.
 - d. If multiple files are found, delete the BPT2026.xlam in any other folders and keep only one BPT2026.xlam file in the C:\BPT\BPT2026 folder.

CY2026 Bid Pricing Tool Technical Instructions

- e. Repeat step c for any other local hard drives (e.g., D:\) that might contain the BPT2026.xlam file.
8. Check the workbook to see if the issue is resolved.

1.4.2 Missing Add-in from the Toolbar

If you have difficulty with the Add-in or if the Add-in tab is missing from the toolbar, the Add-in file has become corrupted or may not be configured correctly. To resolve this issue:

1. Temporarily rename or remove the Add-in file from the C:\BPT\BPTXXXX folder.
2. Close all Excel Files.
3. Open the BPT file.
4. Go to File> Options> Add-ins >Manage Excel Add-Ins. Click 'Go'.
5. Uncheck the BPT20XX from the Add-ins list and click 'Go'.
6. Rename/Replace the Add-in back to the original naming convention in the C:\BPT\BPTXXXX folder.
7. Go back to the location in Step 4 and check the selection for the BPT20XX add-in and click 'OK'.
8. Confirm that the Add-in Tab in the ribbon loads correctly.

1.4.3 Frequently Asked Questions

The following contains a list of FAQs:

1. **Question:** When I open a BPT file, I only see the BPT Splash Screen. Where are the other worksheets?

Answer: You may have multiple BPTs open in separate instances (i.e., windows) of Excel or it may be due to a corrupted Add-in file. Close all but one BPT file or re-install the Add-in file. (See Section 1.4.1, "Problems with the Add-In File," to re-load the Add-in file)

2. **Question:** Why can't I find the BPT commands, such as BPT Finalize, Circle Invalid and BPT Refresh functionalities, on my Excel Toolbar?

Answer: The BPT add-in functionalities are loaded with the ADD-INS Toolbar and they only appear when the Add-Ins is enabled. Follow the steps below to load the Add-Ins Toolbar.

CY2026 Bid Pricing Tool Technical Instructions

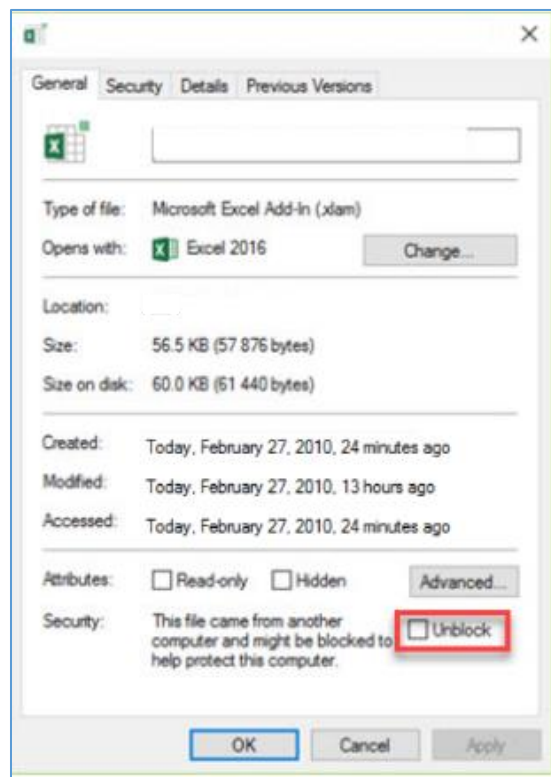
- a. On the Excel, select file menu > Options > Add-Ins > Manage: Excel Add-Ins then click “Go”. In the Add-Ins dialog box, select BPT2026 and click “Ok”
- b. Close the Excel window.
- c. Open the BPT.

3. Question: My add-in is blocked and I do not have the access to add a Trusted Location?

Answer: Work with your IT department to add the Trusted Location. You may have the ability to unblock the macro.

- a. To unblock the files, navigate to the Windows File Explorer to where you saved the BPT files.
- b. For each BPT file and Add-in, right click the file and choose “Properties” from the menu.
- c. At the bottom of the “General” tab, select the “Unblock” checkbox and click “Ok”. Note: Not all system configurations will have this option displayed.
- d. Repeat for each file.

Figure 16 – Unblock the Macro Property

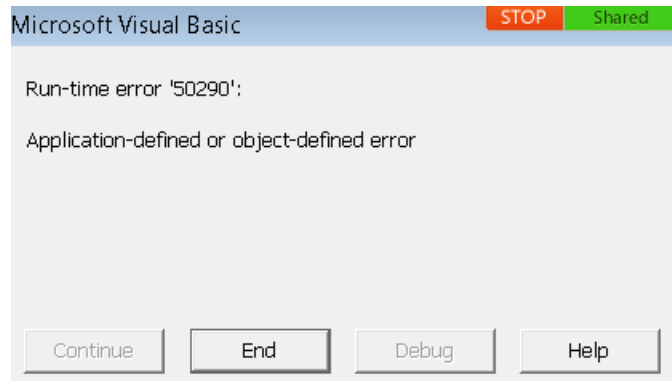


4. Question: Why do I receive the error message “Run-time error 50290” when opening the BPT?

Answer: This issue is caused when Add-In file has Add-In enabled.

CY2026 Bid Pricing Tool Technical Instructions

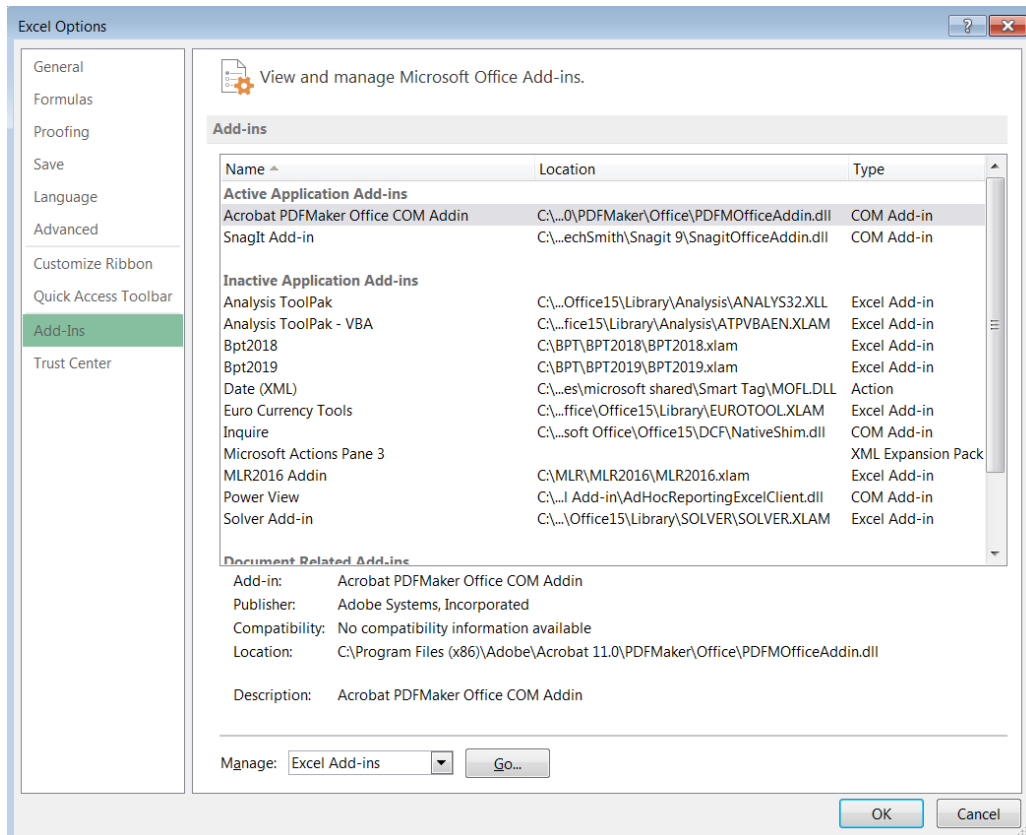
Figure 17 – Run-Time Error 50290



To resolve this issue:

1. Go to Click File>Options>Add-ins>”Go” (Figure 18)
2. Unselect BPT Add-In.

Figure 18 – Add- Ins Window



CY2026 Bid Pricing Tool Technical Instructions

5. **Question:** I have entered multiple County Codes (MA5.VI.3, MSA3.III.2), but the formulae are not copied into row 40 and below?

Answer: This may be due to the BPT add-in file not being properly loaded in the BPT. Follow the steps in Section **See Section 1.4.1**, “Problems with the Add-In File,” to re-load the add-in file.

6. **Question:** The Macro Security setting on my PC is set to “Enable all macros” but I don’t see the prompt when opening the BPT. Do I need to enable the Macros in another way?

Answer: If the Macro security setting is “Enable all macros”, the BPT Add-in file will automatically run when you open the BPT; therefore, you don’t see the prompt to enable macros. For security purposes, it is recommended that the Macro Security Level be set to “Disable all macros with notification”.

7. **Question:** I encountered the following error(s) when finalizing the BPT, what should I do? (See any of the below errors)

There was an error when finalizing the BPT.

Error 13: Type mismatch

Figure 19 - Error Message 1 in MA BPT

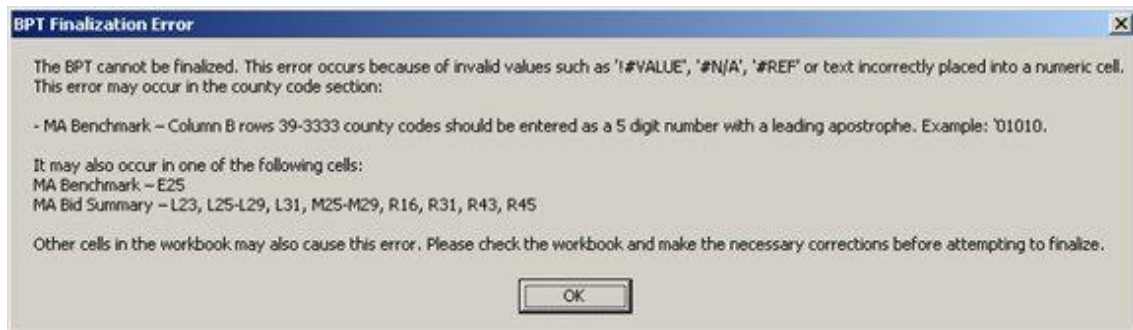
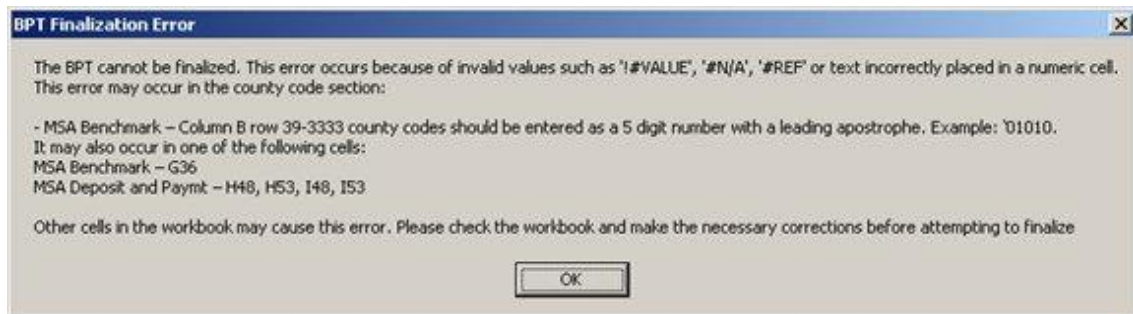
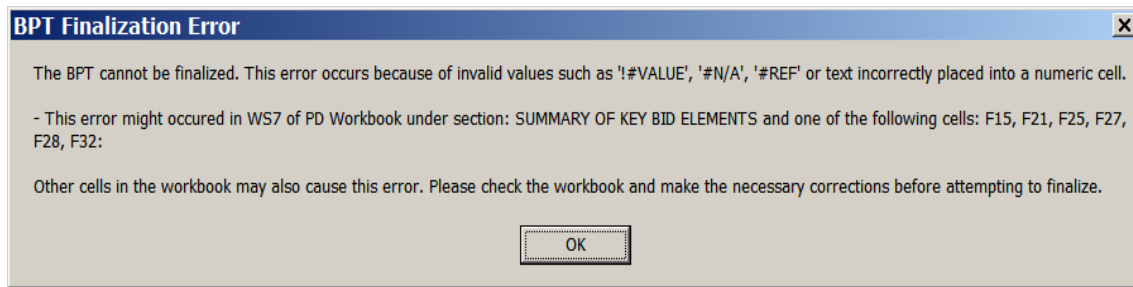


Figure 20 - Error Message 2 in MSA BPT



CY2026 Bid Pricing Tool Technical Instructions

Figure 21 - Error Message in PD BPT

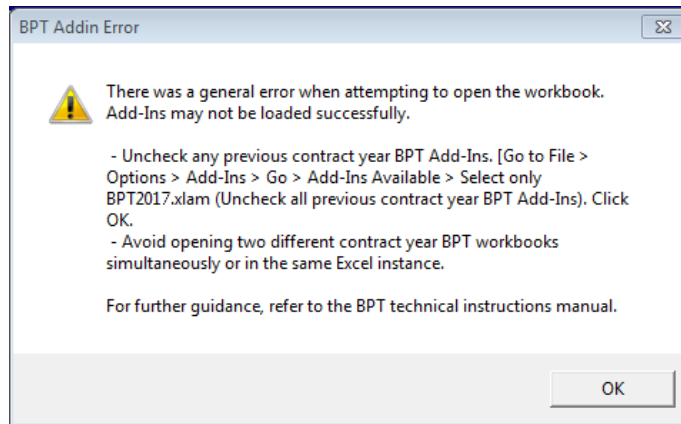


Answer: If you receive any of these messages, check the referenced workbook cells and verify that they do not contain # VALUE, # N/A, # REF, text, or #DIV/0!.

If the referenced cells do contain valid values, please check the entire workbook for cells that either contains the #ERROR message or text values instead of numeric values. These need to be corrected before you can finalize the BPT workbook.

8. Question: I received a “subscript out of range” error. What should I do? (**Figure 22**)

Figure 22 - BPT Addin Error



Answer: CY2025 and CY2026 working files cannot be open in the same Excel instance (window). Open the CY2026 working file in a different Excel instance. (Close all workbooks and all instances of Excel. Open Excel and in the (first) instance open the CY2026 workbook. Then open a second instance of Excel and open the CY2025 workbook. (See Section 1.2.3, “Version Compatibility.”) If this does not resolve the issue, open an Excel window, Select File>Options>Add-ins>Go button and then make sure the “BPT2024” and “BPT2025” boxes are unchecked. Open the BPT file in this Excel window.

For returning BPT users (i.e., those that used the CY2025 BPT), you may receive this error message upon opening the CY2026 BPT for the very first time. If this error occurs, select File>Options>Add-ins>Go button and un-check the “BPT2025” box. Verify that the “BPT2026” box is checked. This will resolve the error when opening the CY2026 BPT thereafter.

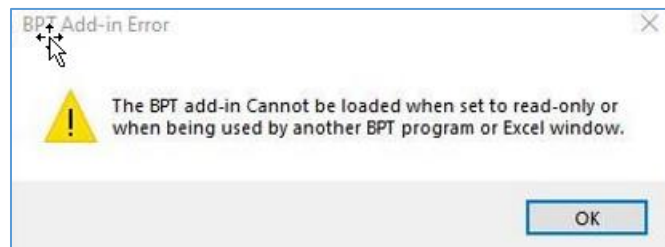
CY2026 Bid Pricing Tool Technical Instructions

9. **Question:** When opening the BPTs in Office 365, why are the add-ins not loading? Or Why do I receive the following error message when opening the BPT in 365 “The BPT add-in cannot be loaded when set to read-only or when being used by another BPT program or Excel window.” Or Why do I receive the following error message when opening the BPT in 365 “ The workbook BPT20XXMA.xlsm is in read-only mode. Please change this property if you would like to modify the BPT.”

Answer: This message can occur if your organization has added a Sensitivity label to the Office 365 Excel. The BPTs, BPT add-in and Batch Tool do not support the Office 365 Sensitivity label as it creates a security conflict. To resolve:

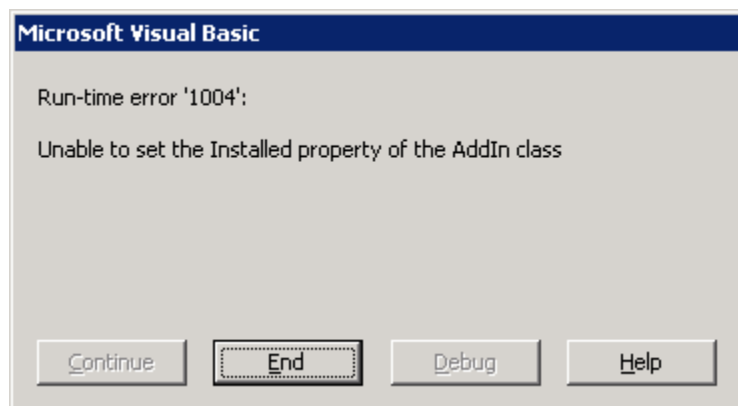
1. Please work with your organization to receive an exception for the Office 365 Sensitivity label policy on Excel while working with the BPTs/BPT add-in and BPT Batch Tool. Though the BPT does not support the label, for organizations using the “Microsoft Azure Information Protection” add-in to apply the Sensitivity label, ensure the Azure add-in is disabled, which may prevent the BPT add-in from loading as this has provided resolution for some organizations.

Figure 23 – BPT Add-in Error due to Sensitivity Label



10. **Question:** I receive the following Run Time Error when opening BPT files. What should I do? (Figure 24)

Figure 24 - Run Time Error



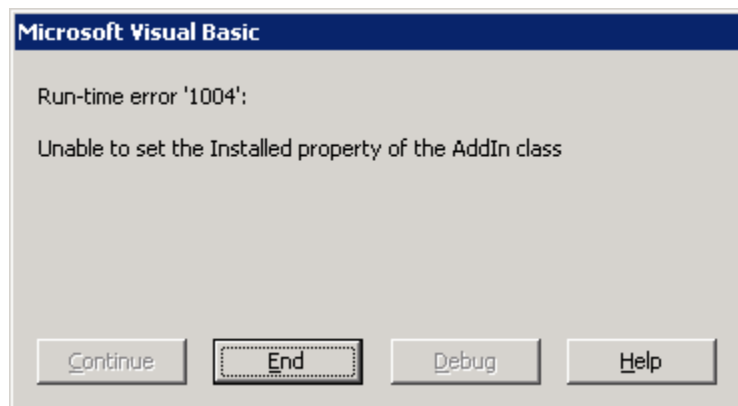
CY2026 Bid Pricing Tool Technical Instructions

Answer: This may happen if the Excel process does not load the BPT Add-in file properly prior to opening and saving a working BPT file in the same Excel instance.

1. Open an Excel instance.
2. Click File>Options>Add-ins>"Go".
3. In the list of Add-ins, select the checkbox for BPT2026.
4. Close the existing Excel window and re-open the BPT file. If this does not resolve the issue, follow the steps in **See Section 1.4.1**, "Problems with the Add-In File," to re-load the Add-in.

11. Question: I receive the following Run Time Error when opening BPT files. What should I do? (Figure 25)

Figure 25 - Run Time Error



Answer: This may happen if the Excel process does not load the BPT Add-in file properly prior to opening and saving a working BPT file in the same Excel instance.

1. Open an Excel instance.
2. Click File>Options>Add-ins>"Go".
3. In the list of Add-ins, select the checkbox for BPT2026.
4. Close the existing Excel window and re-open the BPT file. If this does not resolve the issue, follow the steps in Section **See Section 1.4.1**, "Problems with the Add-In File," to re-load the Add-in.

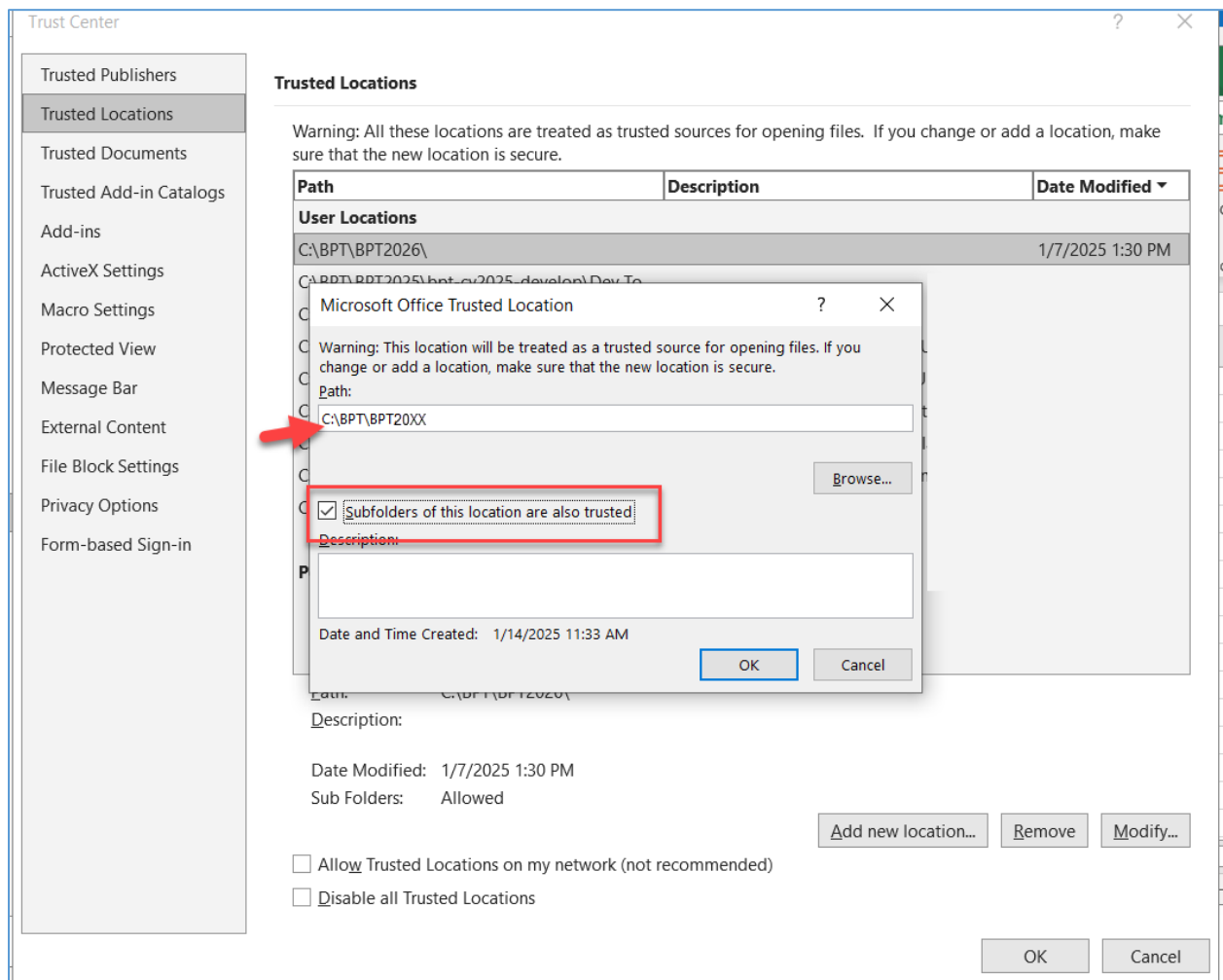
12. Question: The BPT requires me to enable the macro contents each time I open the BPT (even with the Digital Signature). How do I resolve?

Answer: Add a Trusted Location for the BPT and Add-in File location. This may require your IT department:

CY2026 Bid Pricing Tool Technical Instructions

1. Click File>Options>Trust Center>Trust Center Settings>Trusted Locations
2. Click 'Add New location'.
3. Add the location of "C:\BPT\BPT20XX" by selecting the Browse button
4. Select the checkbox "Subfolders of this location are also trusted"
5. Click 'OK' to close the Popup. The location should be displayed in the Trusted Locations Path.
6. Click "OK" to close the Options.

Figure 26 – Trusted Locations



13. Question: I am trying to open BPT files, but I do not see the Option button. How do I enable contents?

CY2026 Bid Pricing Tool Technical Instructions

Answer: To enable the contents:

1. Click File>Options>Trust Center>Trust Center Settings
2. Click Trust Center > Trust Center Settings >Message Bar.
3. Click the first radio button below:
 - Show the Message Bar in all applications when active content, such as ActiveX controls and macros, has been blocked. This option is selected by default so that you get Message Bar alerts whenever potentially unsafe content has been disabled. The option is not selected if you clicked the “Disable all macros without notification” option on the Macros pane of the Trust Center. If you click disable all macros without notification, you will not get Message Bar alerts when macros are disabled.
 - Never show information about blocked content. This option disables the Message Bar.

14. Question: Why is the Excel window in the background while Batch is running, can I close it?

Answer: No, you cannot close, edit or alter the Excel window while the batch is running. The Excel window is a normal process of the Batch Tool. Interfering with the Excel window can cause errors in the batch process.

15. Question: Why do I see “Protected View” when I open the BPT file?

Answer: Protected view turns on when you try to open BPT files directly from a network folder or an outlook email or an internet site. You should save the BPT files in local folder before opening.

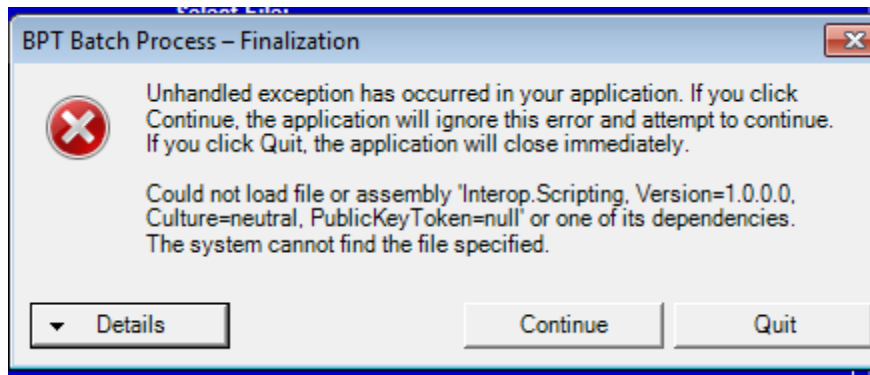
16. Question: Why do I receive the error “Error updating the BPT – 1004: Cannot access ‘filename.xlsx’” when I open the BPT file?

Answer: This error may be received when the user is trying to open the BPT via a network drive (BPT only supports local drives), the version of Microsoft Office being used is an older version and needs to be updated, or there are insufficient user privileges to open the BPT files.

17. Question: Why do I receive the message “*Unhandled exception has occurred in your application*” If you click Continue, the application will ignore this error and attempt to continue. If you click Quit, the application will close immediately.” Could not load file or assembly ‘Interop.Scripting, Version=1.0.0.0 Culture=neutral. PublicKey=null’ or one of its dependencies. The system cannot find the files specified” when I open the BPT file?

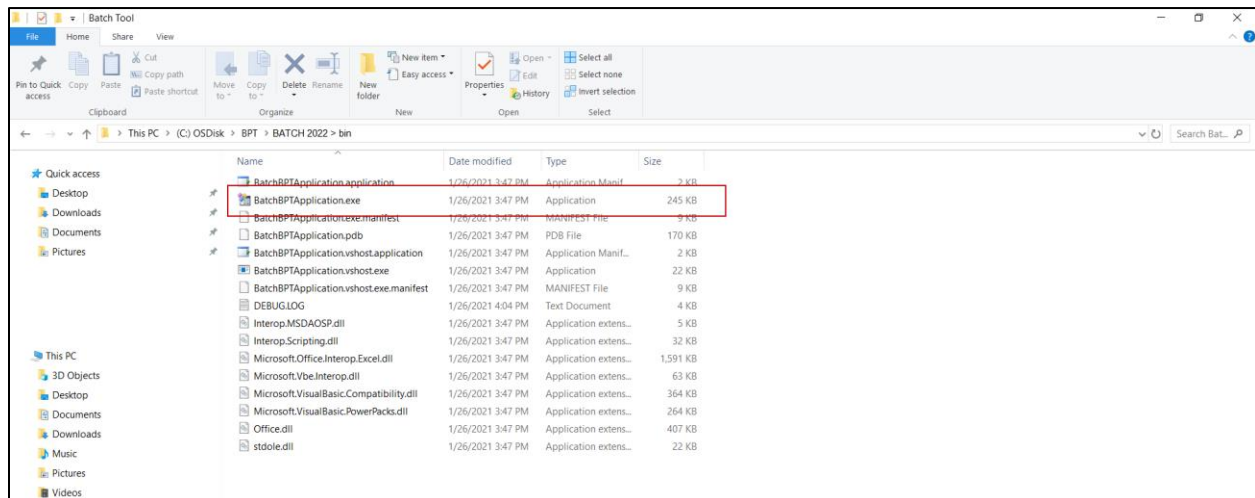
CY2026 Bid Pricing Tool Technical Instructions

Figure 27 - BPT Batch Process Finalization Error



Answer: In order to remove this error message the user needs to put all the dependency files and .exe files together in one folder. The .exe file cannot be located in a separate folder from the other dependency files (Figure 28)

Figure 28 - Dependency and Execution Files

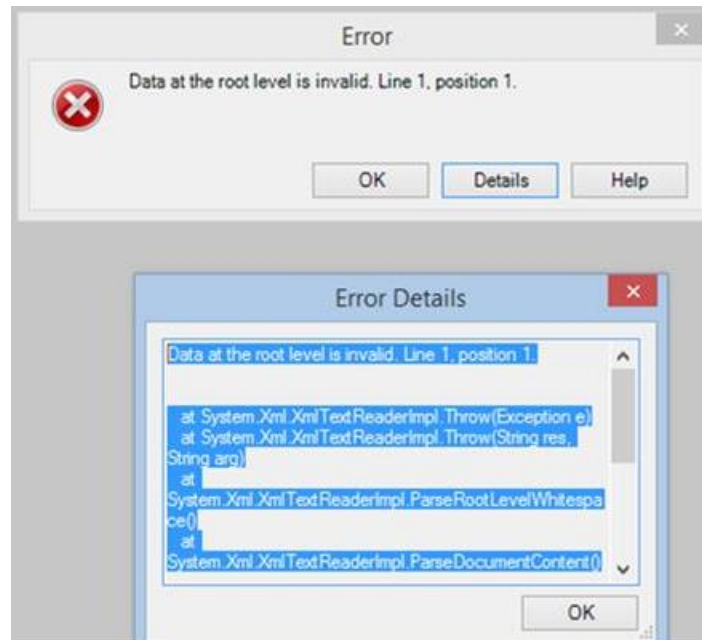


18. Question: Why do I receive the error message “Data at the root level is invalid. Line 1, position 1” when finalizing the BPT?

Answer: This issue is caused by an interaction between the new XML encryption feature of the BPT workbooks and the Laserfiche plugin. The plugin is attempting to automatically validate the XML output of the finalized BPT, but since the XML is encrypted, it does not appear valid. Please ensure that the Laserfiche plugin is disabled prior to finalizing the BPT files.

CY2026 Bid Pricing Tool Technical Instructions

Figure 29 - BPT Finalization Error

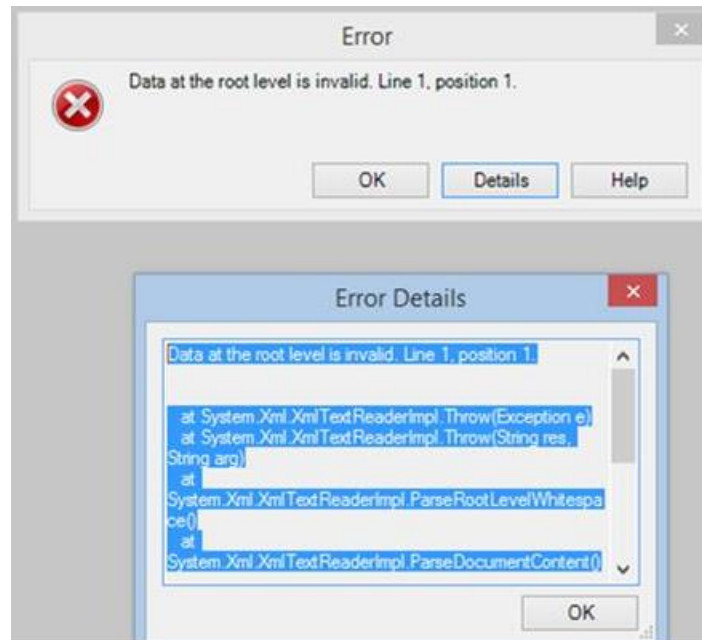


19. Question: Why do I receive the error message “Data at the root level is invalid. Line 1, position 1” when finalizing the BPT?

Answer: This issue is caused by an interaction between the new XML encryption feature of the BPT workbooks and the Laserfiche plugin. The plugin is attempting to automatically validate the XML output of the finalized BPT, but since the XML is encrypted, it does not appear valid. Please ensure that the Laserfiche plugin is disabled prior to finalizing the BPT files.

CY2026 Bid Pricing Tool Technical Instructions

Figure 30 - BPT Finalization Error



20. Question: Why do I receive the error message “Run-time error 91” when opening the BPT?

Answer: This issue is caused by multiple instances of Microsoft Excel open. Please close all instances of Microsoft Excel and re-open the BPT file.

21. Question: I am selecting the option in Batch Tool to “Update PD Premium in MA” and getting an error.

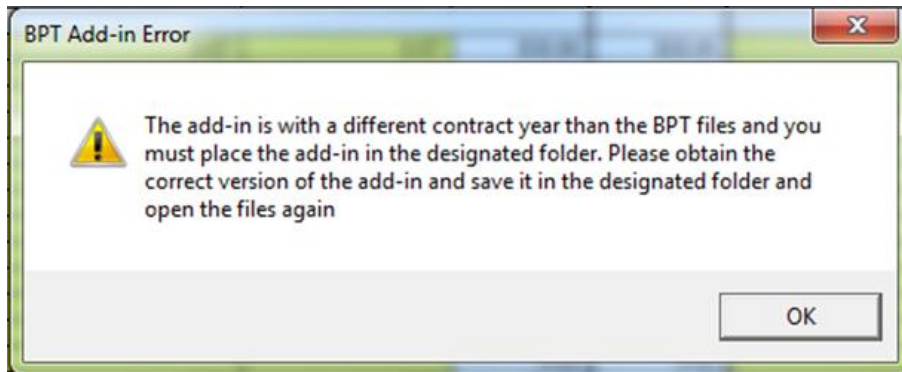
Answer: Please follow the process under 2.1.9.5.

22. Question: Why do I receive the error message: “The add-in is with a different contract year than the BPT files and you must place the add-in in the designated folder.” when opening the BPT even though there are no other files on my system and the add-in is the latest version?

Answer: If the issue is unresolved after following the steps in Section 1.4.1, the system may be pointing to the old contract years’ add-in path.

CY2026 Bid Pricing Tool Technical Instructions

Figure 31 – BPT Add-in Error



To resolve, this issue follow these steps to clear the registry and reconfigure with the latest add-in:

1. Temporarily rename or remove the Add-in file from the C:\BPT\BPTXXXX folder.
2. Close all Excel Files.
3. Open the BPT file.
4. Go to File> Options> Add-ins >"Go".
5. Uncheck the BPT20XX from the Add-ins list and click 'Go'.
6. Rename/Replace the Add-in back to the original naming convention in the C:\BPT\BPTXXXX folder.
7. Go back to the location in Step 4 and check the selection for the BPT20XX add-in and click 'OK'.
8. Confirm that the Add-in Tab in the ribbon loads correctly.

23. Question: Why do I receive the error message: *"The BPT20XX.xlam is currently open with the BPT workbook(s). Please make sure that you close all the BPT workbooks before proceeding the batch process."* when running the batch tool? (Figure 32)

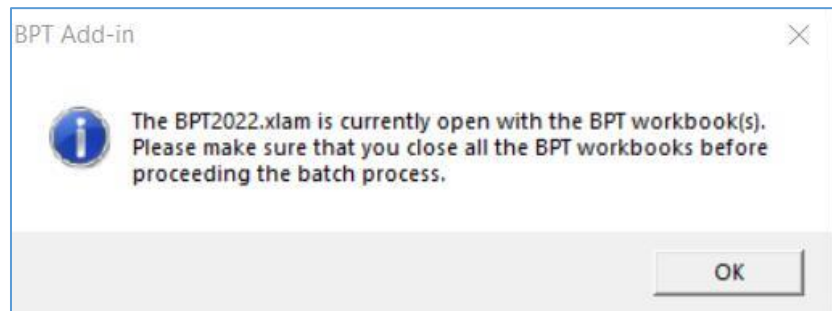
Answer: This issue can occur with multiple excel instances running and the batch tool loads the add-in into itself rather than the BPT workbook. To resolve this issue follow these steps to clear the registry and reconfigure with the latest add-in:

1. Close the Batch Tool and any excel instances.
2. Open the BPT file.

CY2026 Bid Pricing Tool Technical Instructions

3. Go to File> Options> Add-ins >"Go".
4. Uncheck the BPT20XX from the Add-ins list and click 'Go'.
5. Close the file and attempt the batch process again.
6. If the steps above do not resolve the issue, follow the additional steps on the Add-in file.
7. Open the Add-in file. The excel file will be blank with a gray background.
8. Go to File> Options> Add-ins >"Go".
9. Uncheck the BPT20XX from the Add-ins list and click 'Go'.
10. Close the file.

Figure 32 – BPT Batch Error due to Add-in



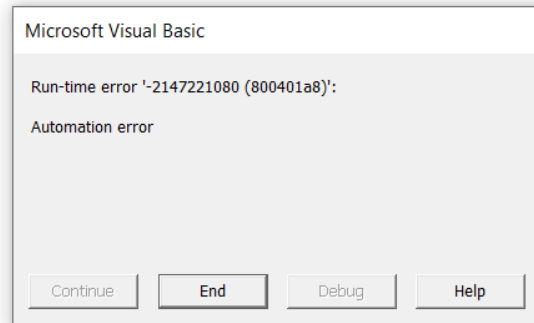
- 24.** Why do I receive the error message: "*Run-time error '-2147221080 (800401a8) Automation error'*" when running the batch tool? (Figure 33)

Answer: This message can occur when running a large batch process. To resolve:

1. Click 'End' on the message.
2. The files will continue to process in the Batch tool.

CY2026 Bid Pricing Tool Technical Instructions

Figure 33 – BPT Batch Run-time Error due Processing Large Number of Files

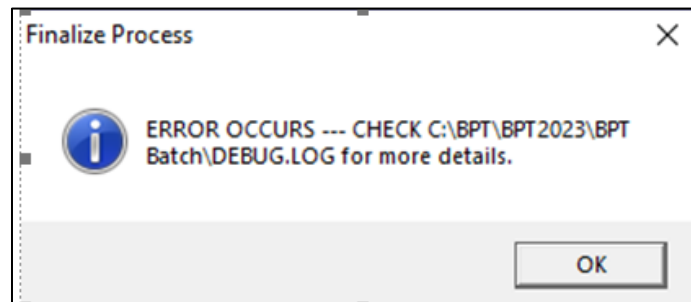


25. Question: When running the Batch tool, why do I receive the error message: “*ERROR OCCURS ---CHECK C:\BPT\BPT20XX\BPT Batch\DEBUG.LOG*” followed by a message in the DEBUG LOG ‘*Error loading type library/DLL. (Exception from HRESULT: 0x80029C4A (TYPE_E_CANTLOADLIBRARY)) : 48*’? (Figure 34 and Figure 35)

Answer: This message can occur when there has been a recent update to Microsoft Office/Excel where there are duplicate registries or removed registries. To resolve:

1. Repair the MS Office install using the repair tool such as ‘Office 365 Repair 16.x - Quick Repair Install’ to resolve any registry issues.
2. If this does not resolve the issue, remove and re-install MS Office.
3. If there are 2 versions of excel running on the system, uninstall the older one, and repair the most recent installation afterwards.

Figure 34 – BPT Batch Tool Error in Debug Log for MS Office Upgrade



CY2026 Bid Pricing Tool Technical Instructions

Figure 35 – BPT Batch Tool Error due to MS Office Upgrade

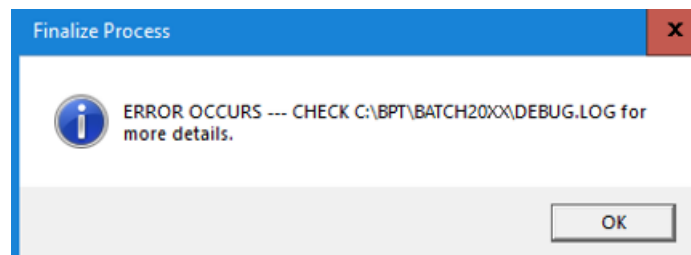
```
Error loading type library/DLL. (Exception from HRESULT: 0x80029C4A (TYPE_E_CANTLOADLIBRARY)) : 48
6/14/2022 12:49:11 PM - 
6/14/2022 12:49:11 PM - --- END TRAPPED
6/14/2022 12:49:11 PM - 
6/14/2022 12:49:27 PM - ERROR OCCURS --- see above for more details.
6/14/2022 12:49:27 PM - 
6/14/2022 12:49:27 PM - Checking BeforeExit...
6/14/2022 12:49:27 PM -
```

26. Question: Why is the Batch Tool failing upon processing with a Critical Error in Debug Log when using Office 365?

Answer: This often indicates there is a local problem with Excel installation and it needs to be repaired or reinstalled.

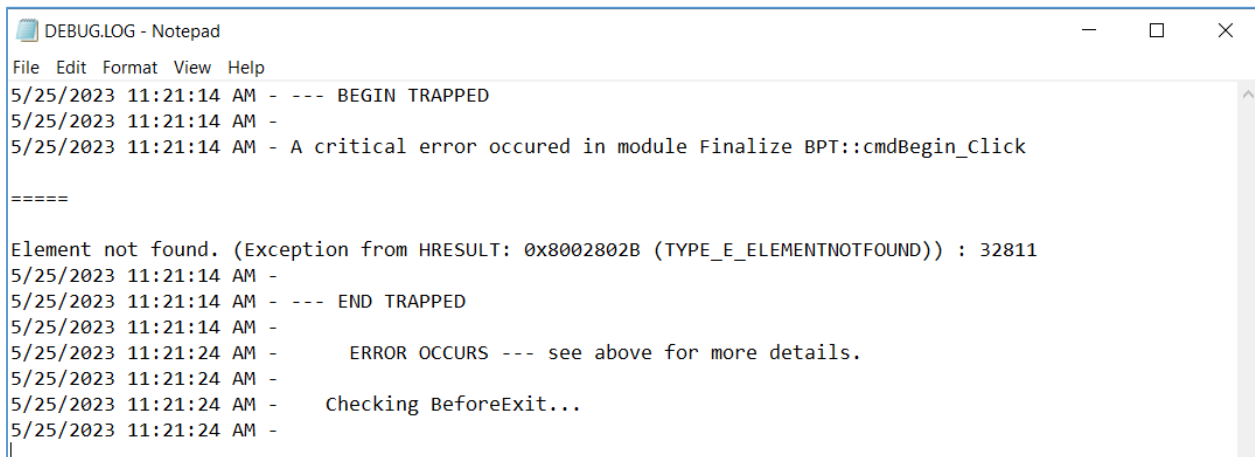
1. Confirm if any other users in your organization are able to use the batch. If other users have no issue, attempt to repair or reinstall Office 365.
2. Open Microsoft Windows Settings.
3. Click Apps to open the Apps & features window.
4. Find and click your Microsoft application in the list, such as Microsoft Office 365.
5. Select Modify, then Quick Repair, and follow the onscreen instructions.

Figure 36 – BPT Batch Tool Error due to Office 365 Install Issues



CY2026 Bid Pricing Tool Technical Instructions

Figure 37 – BPT Debug Log due to Office 365 Install Issues



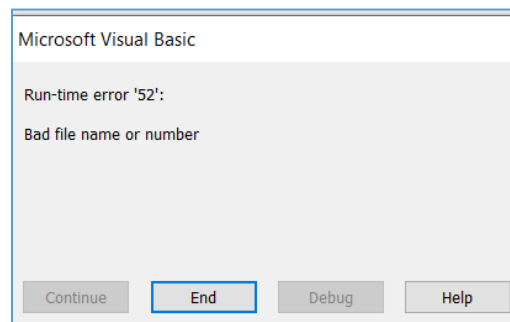
```
DEBUG.LOG - Notepad
File Edit Format View Help
5/25/2023 11:21:14 AM - --- BEGIN TRAPPED
5/25/2023 11:21:14 AM -
5/25/2023 11:21:14 AM - A critical error occured in module Finalize BPT::cmdBegin_Click
=====
Element not found. (Exception from HRESULT: 0x8002802B (TYPE_E_ELEMENTNOTFOUND)) : 32811
5/25/2023 11:21:14 AM -
5/25/2023 11:21:14 AM - --- END TRAPPED
5/25/2023 11:21:14 AM -
5/25/2023 11:21:24 AM - ERROR OCCURS --- see above for more details.
5/25/2023 11:21:24 AM -
5/25/2023 11:21:24 AM - Checking BeforeExit...
5/25/2023 11:21:24 AM -
```

27. Question: Why do I receive a run time error when opening my BPT files from OneDrive?

Answer: BPT files stored in OneDrive must be placed within a folder (BPT20XX>BPTs).

1. Create a BPT20XX folder in your OneDrive.
2. Move your BPT files to the folder location and try again. (Add-in location must still be located in the C:\BPT\BPT20XX location.

Figure 38 – BPT Run Time Error when opening files from OneDrive



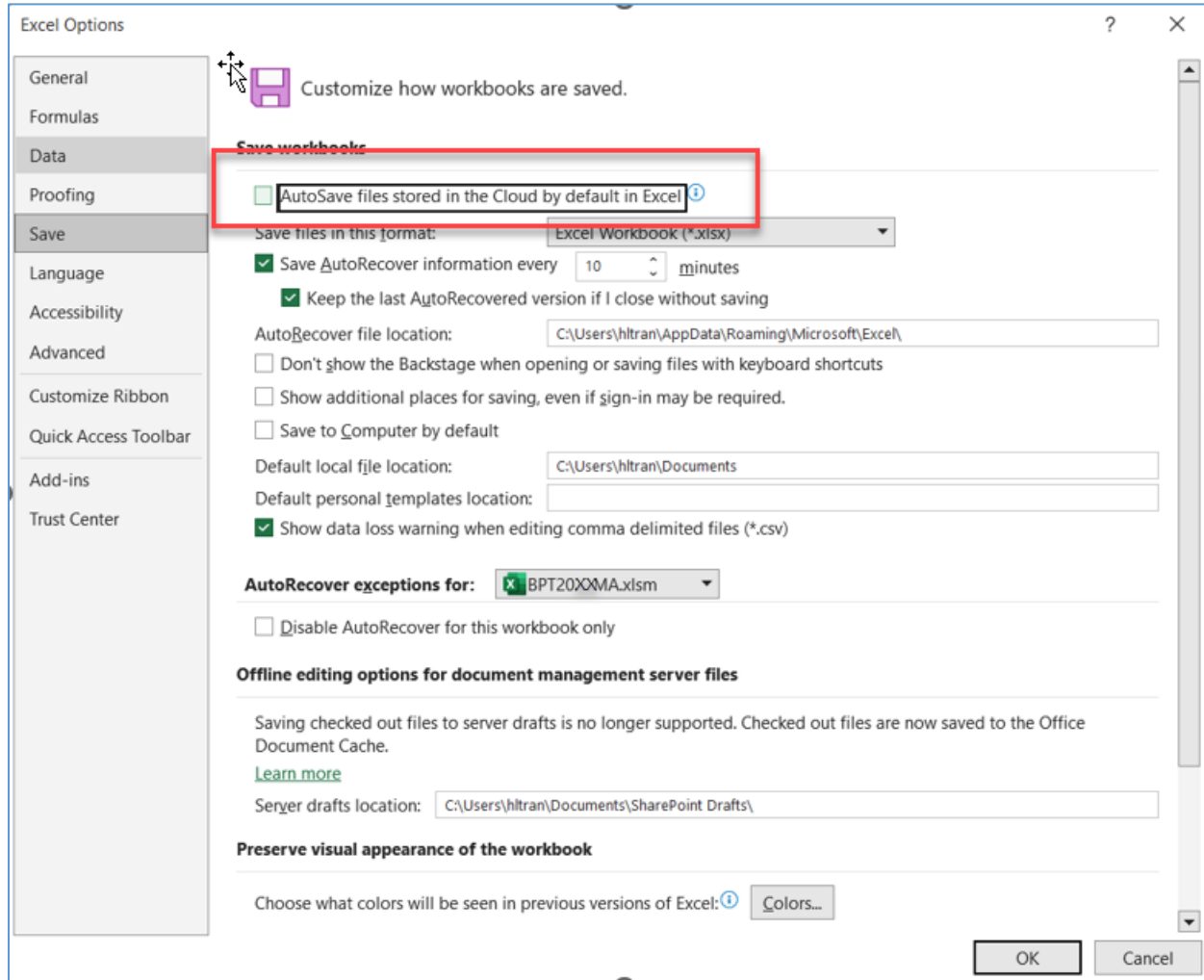
28. Question: Why are my Add-in features not working properly from OneDrive? (The Add-in features keeps restarting)

Answer: When working with BPT workbooks ensure the AutoSave option is turned off to prevent the BPT Add-in features from conflicting with Auto-Save. This specifically can occur with Office 365 and OneDrive.

CY2026 Bid Pricing Tool Technical Instructions

1. Verify the AutoSave feature is disabled. Go to Options>Save-> Uncheck the option 'AutoSave files stored in the Cloud by default in Excel'.

Figure 39 – AutoSave Options for BPT Workbooks



1.4.4 Support

If you need additional assistance, please call the HPMS Help Desk at 1-800-220-2028 or email them at hpms@cms.hhs.gov.